

FOUNDATION *News*

Produced by THE UNIVERSITY OF MISSISSIPPI FOUNDATION SUMMER 2011



INSIDE

Herrins Fund Scholarships p. 3 ■ Brevard Hall Honors Family p. 4 ■ Mannings Help Students p. 6

The University of Mississippi Foundation

is a nonprofit corporation chartered in 1973 by the State of Mississippi to operate primarily for the benefit of the University of Mississippi. The Foundation is responsible for receiving, receipting, investing and distributing all gifts for the benefit of the University of Mississippi. It pursues this mission in an environment of productive teamwork, effective communication and relentless service to our donors, University administrators, faculty, staff and students. Communication of University needs and priorities along with encouraging investment in the future of Ole Miss are integral to our success. Integrity, honor, civility, service and respect for our donors and their wishes serve as the Foundation's guiding principles.

The University of Mississippi Foundation

P.O. Box 249, University, MS 38677

www.umf.olemiss.edu

email: umf@olemiss.edu

Telephone: (800) 340-9542

Facsimilie: (662) 915-7880

The University complies with all applicable laws regarding affirmative action and equal opportunity in all its activities and programs and does not discriminate against anyone protected by law because of age, color, disability, national origin, race, religion, sex, or status as a veteran or disabled veteran.

Edited by

Tina H. Hahn and Donna H. Patton

Contributing Editor

Sandra McGuire Guest

Contributing Writers

Tina H. Hahn, Jennifer Hospodor, Barbara Lago, Aaron Spencer, Janis Quinn, Sue Weakley, Matt Westerfield

Graphic Designer

Stephanie S. Wood

Contributing Photographers

Kevin Bain, Jay Ferchaud, Robert Jordan, Nathan Latil



Using your smart phone, scan the QR code above to visit the Foundation's website.

IN THIS ISSUE

Message from Chancellor Jones	1
Message from UM Foundation	1

ACADEMICS

Hardin Foundation Honors Archie McDonnell	2
Three Alumni Join to Support Faculty	2
Carl and Nancy Herrin Create Scholarship Fund	3
Building Name Reflects Brevard Family Gifts	4
UM Endowment Reaches \$478.5 Million	5
Eli and Abby Manning Support OMO Fund	6
Ed and Barbara Krei Provide Faculty Support	7
Talented Students Become Croft Scholars	8
2+2 Scholarship Fund Surpasses \$1M Mark	10
Strojny's Step Forward with Faculty Support	11

FEATURE

UM Dedicates Robert C. Khayat Law Center	12-13
--	-------

ACADEMICS

John and Mary Thomas Give Scholarship	14
Foundation Pays Tribute to Tommy Ramey	15
Bowmans Extend Resources to Three Areas	16
Liberal Arts Board Unites for Faculty Gift	17
Richard Gilder Establishes Speaker Series	17

ATHLETICS

Ken Kirk Remembers Football Program	18
Athletics Donors Embrace Vaught Society	19

1848 SOCIETY

Bill and Lee Anne Fry Address UM Needs	20
D.J. and Janet Canale Donate Rare Books	21
John and Anne Frame Show Devotion to UM	21
Hoopers' Gift Undergirds Museum Programs	22
Family, Friends Remember Cantú's Life	22
Museum Gallery Bears Edmonds' Name	23
Edith Kelly-Green Establishes Three Funds	24
Maurice Colly Plans for Student Experiences	25

UNIVERSITY OF MISSISSIPPI MEDICAL CENTER

Pharmacy Building Joins UMMC Campus	26
Wiser Chair Reaches \$1M Funding Level	27
Dentistry Alums Honor Spraberry's Memory	28
Pullen, Thamas Chairs Reflect Contributions	29

CHANCELLOR'S TRUST

Foundation Recognizes Students' Experiences	30
---	----

SPECIAL NOTE

Lott Leadership Institute Thanks Bob Haws	31
Summers Foundation Receives Unique Gift	31
OMWC Legacy Award Goes to Olivia Manning	32
New Members Join Foundation Board	32
Jan Farrington Leads Foundation Board	33

ON THE COVER: Graduating seniors of UM's Croft Institute for International Studies



UM Chancellor Dan Jones

Message from the Chancellor

What's behind a number? When we examine the University of Mississippi's growth, the first number that comes to mind is student enrollment. Another that is quite evident is the number of dedicated donors who provide generous gifts for our continued expansion and growth.

For the third consecutive year, we expect to welcome a record-breaking freshman class. We are anticipating around 500 more freshmen than last year, placing our enrollment on all campuses at more than 20,000. This growth can be traced to several factors. Students who have great experiences here provide enthusiastic recommendations to others. Those positive experiences come from the teaching of outstanding professors and the remarkable opportunities from strong, innovative programs – most of which are possible because of private support.

Although tuition has been increased statewide, an Ole Miss degree continues to be a "best value" compared to peer institutions. Other attractive offerings of our university community include exciting SEC sports and the vibrant City of Oxford. Our university continues to benefit from the positive exposure received from our hosting the first 2008 Presidential

Debate and the success of "The Blind Side" movie.

While we are pleased with our enrollment number, it brings great challenges. The increase places demands on professors, classroom space, residential halls and infrastructure. These students require parking, dining, fitness facilities and much more, and they will need scholarship support.

Admission requirements are standard for all Mississippi public universities. However, we requested and were granted permission from the state Institutions for Higher Learning to exercise more selection over applicants from outside the state beginning in 2012. We hope to welcome all eligible applicants to our student body, but this provides a way of managing our growth if needed. We are not placing a cap on enrollment, but we are sensitive to our role as the flagship university in this state. Around a half of our freshman class now hails from outside Mississippi, although as any class progresses beyond that first year and community college students transfer in, the makeup reflects a majority of Mississippians.

Getting to that second number I mentioned – you, our donors – please know your involvement and support of our university is deeply appreciated. The fact that so many students want to enroll here and benefit from the Ole Miss experience is a fitting tribute to the number of alumni and friends who provide generous resources to strengthen the University of Mississippi. Thank you, and please know we are dedicated to being good stewards of your remarkable gifts.



Foundation CEO Wendell Weakley

Message from the Foundation President/CEO

Due to your generous support, our university continues to expand and offer incredible opportunities for people of all ages – as well it should. Lifelong learning is encouraged, and we also want to provide activities that draw alumni and friends back, welcoming all to remain involved in the life of Ole Miss.

To maintain this vibrancy, however, we would ask you to consider two specific areas of need: Student scholarship support and faculty support. In this newsletter, you will find a number of stories on dedicated donors who have provided gifts for scholarships. Now more than ever, a critical need exists for scholarships. Tuition costs have risen due to decreased state funding, and the economic woes of the nation have significantly impacted families. At the core of this issue is our recognition that for our state, region and nation to make progress, we must have an educated population.

The university established Ole Miss Opportunity in 2010 to address the issue of higher education access for lower-income families. The response of academically qualified students for access to this scholarship

fund has exceeded our projections. Very simply, the need is great. Please consider extending scholarship assistance to eligible young people either by creating a scholarship fund in your name, your company's or foundation's name, or through Ole Miss Opportunity.

With the focus still on students, we continue our efforts to attract support for faculty, who are paid significantly less than their peers (full professors) in the Southern University Group. Thanks to the generosity of our donors, the Barnard Initiative has received more than \$10 million in endowed support to attract and retain outstanding teachers – who are key to ensuring both a high-quality education and a strong academic reputation. Please join us in adding \$100 million to faculty support, a goal that will help guarantee an exceptional future for Ole Miss academics.

The hallmark of our loyal alumni and friend base is your commitment to "giving back" by enhancing opportunities for students and for this university. Gifts of all kinds and all sizes make a difference. Join us in this quest: Help increase opportunities in an area for which you are interested and passionate, then experience the impact in students' lives as well as on your own.



Hardin Foundation Creates Archie McDonnell Teacher Corps Fellows Endowment at Ole Miss



Archie McDonnell has demonstrated a lifelong interest in the education of Mississippians.

That commitment will live on, thanks to a multiyear gift to endow a fellowship in his name with UM's Mississippi Teachers Corps. The fund was created by the Hardin Foundation of Meridian, which McDonnell helped co-found in 1964.

The Teacher Corps recruits college graduates to meet the teacher shortage in the state's neediest schools. It is one of the nation's most competitive two-year, alternate-route teaching programs.

"Archie was a firm believer in the need for quality education... and we couldn't think

of a better way to honor his many years of service to the Phil Hardin Foundation than by establishing this endowment at the University of Mississippi for the Archie McDonnell Teacher Corps Fellows Program," said Robert Ward, board president.

McDonnell served in World War II and then earned a business degree from UM in 1948. He began his career as a bank examiner with the FDIC and went on to serve 40 years as chief executive officer and chairman of the board of Citizens National Bank in Meridian. During his tenure, the bank's assets grew from \$11 million to more than \$500 million, with 23 locations in 11 communities.

McDonnell served on the Hardin Foundation Board until 2008, when he was named director emeritus. During his service, the foundation's portfolio grew from \$8 million to \$50 million.

Chancellor Dan Jones said the Hardin

gift will help transform the educational and economic future of poor communities.

"The Teacher Corps program... seeks to attract the best minds into the teaching profession," he said. "These teachers who come to Ole Miss from all over the United States are trained here and then assigned to teaching positions in Mississippi school districts that often experience shortages."

Andy Mullins helped create the Teacher Corps in 1989 and continues as its co-director. "We are very grateful to the Phil Hardin Foundation for creating this fellows endowment," said Mullins, who also is chief of staff for Jones. "I know of no better way to honor a Hardin Foundation co-founder."

McDonnell and his wife, Frances, have three children, Cathy McDonnell Hall, Archie R. McDonnell Jr. and the late John Elton McDonnell, all of Meridian; seven grandchildren and five great-grandchildren.

"One of the main reasons I have had success in my career is the preparation I received from School of Accountancy professors."



The Patterson School has a national reputation for excellence. It produces well-rounded graduates because the teaching and curriculum is relevant, thorough and hands-on."

- James L. "Jay" Oliphant III

Three Alumni Join to Provide Accountancy Faculty Support

UM accountancy degrees brought James L. "Jay" Oliphant III and Jason and Amy Shackelford together as colleagues and friends, and now they have joined to provide faculty support in the Patterson School of Accountancy.

The Memphis professionals have created the Oliphant-Shackelford Accountancy Alumni Fellows Endowment to support salary supplements, research and creative activities of faculty. Under the Alumni Fellows program annual income from individual endowments is combined to provide a general pool of faculty support used by the accountancy dean.

"One of the main reasons I have had success in my career is the preparation I received from School of Accountancy professors," said Oliphant, who oversees business development for Dixon Hughes Goodman, an accounting and advisory firm. "The Patterson School has a national reputation for excellence. It produces well-rounded graduates because the teaching and curriculum is relevant, thorough and hands-on."

"Faculty members are what make the Patterson School of Accountancy great," Oliphant continued. "Jason, Amy and I want to see this impact continue. We've got to have the best professors mentoring accountancy students."

Oliphant earned an undergraduate degree in accountancy in 1996 and a master's degree in 1997. Jason Shackelford, who is director of accounting and corporate controller for GTx, Inc., a biopharmaceutical company, earned an undergraduate in business in 1997 and a master's in accountancy in 1998. Currently working in the Corporate Accounting and Analysis Group at Pfizer, Inc., Amy McIntosh Shackelford earned an undergraduate in accountancy in 1999 and a master's in 2000. All joined the accounting firm KPMG upon graduation.

"Accountancy curriculum is very demanding and competitive, and the professors inspire you to do your best," said Jason Shackelford. "This endowment is a small token of how much the three of us appreciate and how much affection we feel for the accountancy school. Faculty members take a tremendous interest in students and have always done a great job guiding students both in the classroom and as they begin their professional careers."

For more information on the Alumni Fellows program, call Jen McMillan, director of development for the Patterson School, at 662-915-1993 or email mcmillan@olemiss.edu.

Herrins Give Major Contribution to Establish Need-based Scholarships, Helping Students to Pursue Degrees at UM

Successful businessman Carl Herrin of Jackson remembers that for more than three years he stuck out his thumb and hitchhiked to travel the 115 miles from his hometown of Durant to the University of Mississippi to earn a college degree. To help students who experience financial hardships, Herrin and his wife, Nancy, have created a scholarship endowment with a gift totaling more than \$1 million.

The Carl and Nancy Herrin Scholarship Endowment will annually provide 10 need-based scholarships in the amount of \$5,000 each to Mississippians. The Herrins previously made a \$1 million gift to Ole Miss Athletics to strengthen programs for student-athletes and have provided resources to other UM initiatives.

"I relate to poor students who need scholarships," said Carl Herrin, a 1949 business graduate. "My family was very poor, and I accelerated my studies at Ole Miss in order to graduate early. Those were different times, and I could go anywhere by setting down my suitcase with its Ole Miss sticker and thumbing a ride. After graduation I sought a job with a company that



UM Chancellor Dan Jones thanks Carl and Nancy Herrin for their gift to fund need-based scholarships.

"I relate to poor students who need scholarships. My family was very poor, and I accelerated my studies at Ole Miss in order to graduate early. Those were different times, and I could go anywhere by setting down my suitcase with its Ole Miss sticker and thumbing a ride."

- Carl Herrin

furnished a car and joined General Motors in its insurance division."

Herrin's astute business sense and education not only provided him his first car but also transported him on a career path that has focused on building holdings of multiple auto dealerships and oil and gas interests. However, he has always "come home" to his alma mater.

"I love Ole Miss," Herrin said. "It is part of me, and it truly is a unique institution. The important thing about this scholarship endowment is that it will go on long after we're gone. The costs associated with attending college keep increasing each year, and it seems the govern-

ment may be cutting back on assistance. Education is critical to families and to our state."

The \$1,015,000 Herrin Scholarship Endowment will be held permanently, with the annual income funding scholarships.

"Carl and Nancy Herrin have given the gift of education and opportunity – tremendous resources that will dramatically change lives and move our state and region forward," Chancellor Dan Jones said. "Significant numbers of Mississippi families simply are unable to cover the costs of higher education, and our university is working to address access and affordability issues. We are profoundly grateful to the Herrins for their vision for young people and their willingness to help impact this issue. Providing assistance to current and future generations is a powerful legacy."

Carl Herrin enrolled at UM after service in the U.S. Navy during World War II. His student days saw great change. The GI Bill paid the way for Herrin and many others to study at UM, which sent enrollment soaring to just over 3,200. Enrollment for the 2010-11 academic year was 19,536 on all campuses.

When Herrin completed his degree and had worked for General Motors, he and his brother opened a Lexington auto dealership.

Herrin was hired in 1952 at Milner Chevrolet in Jackson. He moved from service salesman to general manager, implementing programs with record-breaking results. A few years later, Dumas Milner opened a Cadillac dealership in Jackson and sold his Chevrolet dealership to Herrin and George Gear.

Today Herrin and his son, Ole Miss business alumnus Jack Herrin, own a number of auto dealerships in Jackson, including those for Lexus, Infiniti, BMW, Toyota and Chevrolet. Jack, now president, directs day-to-day business operations of the companies, and Carl chairs the board.

"Carl credits the University of Mississippi as giving him the foundation needed for his career," said Nancy Herrin, who also attended Ole Miss and is a Durant native. "He wants to give back to the school that gave him so much. I'm glad we are able to do this for students who are less fortunate so that they can earn college degrees at our university. There's no other place in the world quite like Ole Miss."

The Herrins support the university and return to campus for events, including football games. In addition to the Herrins' son, the couple's daughter and son-in-law, Holly and Don Noblitt Jr., and their son and daughter all pursued business degrees at Ole Miss.



Name of Landmark Building Reflects Longtime Support of Brevard Family to Engineering School, University

David Brevard (from left) and Henry Brevard are interviewed by Errol Castens with the *North-east Mississippi Daily Journal*. In addition to their contributions to the university, the Brevards provide leadership to community and area boards of institutions focusing on health care, senior citizens and young people.

Providing student scholarships, School of Engineering support and alumni leadership are defining elements of the legacy Henry Brevard and his family continue to build at the University of Mississippi.

To honor the family's transformative support, "Brevard Hall" became the name of Old Chemistry – a central building in UM's Engineering Complex – during an April 1 dedication. The name honors the family's longtime support as well as a new gift to the School of Engineering. To date, almost 500 students have pursued degrees, thanks to the family's engineering scholarships, and more will follow.

"The Brevard family has been instrumental in transforming this state for more than 60 years, and we can see the results of their work in communities all across north Mississippi," said Chancellor Dan Jones. "Serving one's community is a cornerstone of the Brevard family, and Henry and Beth Brevard instilled that principle in their children by example. We are profoundly grateful ... for their generosity and involvement that continue to significantly strengthen our university. This new gift focuses on our engineering students and faculty, who will make important contributions on state, national and global fronts."

The Brevard Family Chair in Civil Engineering is created with \$1.5 million of the family's new gift and will be used to recruit distinguished faculty. Another \$750,000 is focused on the Brevard Family Scholarship Endowment, and \$250,000 provides operational funds for Brevard Hall. The family's total contributions exceed \$5 million.

"We feel the Ole Miss School of Engineering has made excellent progress over the past few decades and is poised to make even greater progress in coming years," said Henry Brevard of Tupelo. "About 20 years ago we decided we wanted to give credit to the university that we believe has had a major degree of responsibility for our personal and professional growth. I am grateful for my engineering education at Ole Miss. Among others, former dean of engineering, Dr. Lee H. Johnson, was a teacher of great merit and a strong influence. Our family believes

that no financial donation can repay adequately the mentoring and experience I received here."

The 1943 graduate served as president of the Engineering Alumni Chapter and as chair of the University Foundation, the Engineering Advisory Board and the Woods Order. He was inducted into the Ole Miss Alumni Hall of Fame in 1988.

"Mr. Brevard is generous with his financial donations, but he also continues to have an interest and desire to stay involved with what is taking place here on campus," Dean of Engineering Alex Cheng said. "In particular, he seems to enjoy hearing and seeing those things that affect students of today's generation. He takes the time and effort to follow up on his gifts to ensure funds are used wisely for the benefit of the school and especially for the students. It would be difficult to put into words the far-reaching impact Henry Brevard has had and continues to have on the School of Engineering."

After graduating and then serving as a B29

navigator in the U.S. Air Corps, Brevard married Beth Boozer of Shannon. Brevard first used his civil engineering degree as a Mississippi State Highway Department bridge designer. In 1949, he and his father-in-law, Riley Boozer, became convinced that ready-mix concrete was the wave of the future. They founded B&B Concrete Co., the first transit-mixed concrete plant in North Mississippi. The company now includes 12 other area locations.

The Brevards' son, David, was a 1978 honor graduate from Ole Miss and earned a master's degree from the University of Virginia's Darden School of Business. After business experience in New York, he joined B&B Concrete, where he is president and chief executive officer.

In addition to engineering, a scholarship for

Shawn Brevard (left) and Elizabeth Brevard enjoy the reception hosted after the dedication ceremonies and attended by a wealth of alumni, family and friends. A scholarship in Elizabeth Brevard's honor provides assistance to students pursuing degrees in Southern studies.



"About 20 years ago we decided we wanted to give credit to the university that we believe has had a major degree of responsibility for our personal and professional growth. I am grateful for my engineering education at Ole Miss."

- Henry Brevard

Southern studies students was funded by the family to pay tribute to Beth Brevard through the Ole Miss Women's Council for Philanthropy. Daughter Elise Brevard Smith of Ridgeland joined her father and brother in establishing the scholarship.

Community service is a priority of the Brevard family. Both Henry and David have served in leadership positions on boards of area institutions focusing on health care, senior citizens and young people. Sharing his father's devotion to Ole Miss, David led the national Alumni Association as president, worked on major capital campaigns to attract private gifts for the university and continues his involvement as a member of the UM Foundation Board of Directors. His contributions were applauded in 2009 with the Alumni Service Award.

"My parents love and support Ole Miss. I am motivated to support and participate in the life of the university because of their example, but, more importantly, because of my own recognition of the positive influence Ole Miss has had on my life," he said. "The University of Mississippi is a stronger school now than when I graduated in 1978. Its reputation as a great public university has grown and spread. For this to continue, private support from me and other members of the Ole Miss family is essential."

UM Foundation Achieves Success with Investment Returns on Endowment

Of 850 U.S. colleges, universities and affiliated foundations participating in a national study, the University of Mississippi is rated in the top 17 percent of institutions on investment returns earned on endowment funds.

The National Association of College and University Business Officers-Commonfund Study of Endowments (NCSE) is the most comprehensive annual study of investment management and governance practices of public and private nonprofit colleges and universities and their supporting organizations. Participating institutions represented over \$346 billion in combined endowment assets.

According to the NCSE, institutions' endowments returned an average of 11.9 percent (net of fees) for fiscal year 2010, and the UM Foundation exceeded this average with a 14.6 percent return. The national average represented a dramatic improvement over the average -18.7 percent return (net of fees) reported in the same study during the previous fiscal year, when the near market collapse negatively impacted higher education along with all other sectors of society.

"When our alumni and friends commit resources to the University of Mississippi, they want to know their gifts will be managed in the most effective way possible," said Wendell Weakley, president and chief executive officer of the UM Foundation. "This outstanding investment return performance is due in large part to the diligent efforts of our Joint Committee on University Investment members, who determine the long-term investment policies that bring the greatest harmony to the different disciplines of investing and managing our university's endowment. We are extremely grateful for our loyal donors and strive to earn their confidence in the stewardship of the resources they have entrusted to us."

In another set of data for the period ending March 31, 2011, the one-year and three-year investment returns of public institutions in the Southeastern Conference show UM in fourth place in the one-year returns at 12.7 percent and leading the conference in the three-year returns at 4.3 percent.

The overall endowment (per March 31) now stands at \$478.5 million, with a goal of surpassing the \$500-million mark in the near term. Of that total, 41.3 percent is designated for academic support, 39 percent for scholarship support, 15.6 percent for faculty support and 4.1 for library support.

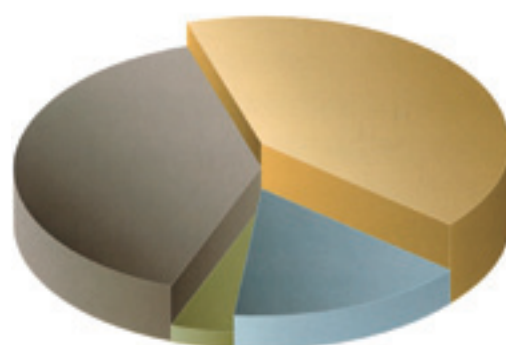
"Growth of the university endowment allows increased support of programs and initiatives, and that growth is achieved with generous donors and wise investments through the ups and downs of the market," said Mike McRee, chair of UM's Joint Committee on University Investments. "We all recognize that a strong endowment dramatically impacts the university's margin of excellence and provides stability during the continuing period of declining state funding for higher education. We appreciate the private support we receive from committed alumni and friends."

The UM Foundation maintains the lowest management fee – ½ of 1 percent – among public institutions in the SEC.

More than 1,200 UM endowments have fully recovered from FY 2009, when negative investment returns due to the market decline pushed hundreds of endowments to levels below their original gift amount.

"The endowment is well-positioned with risks and rewards being carefully measured. However, we recognize there are many factors which will likely add uncomfortable levels of volatility in the near term," Weakley said.

*University's
Endowment
as of March 31, 2011
\$478.5 million*



academic support – 41.3%
faculty support – 15.6%
library support – 4.1%
scholarship support – 39%

NY Giants Quarterback, Wife Present Major Gift to Fund Need-based Scholarships

New York Giants quarterback Eli Manning and his wife, Abby, are ensuring some of Mississippi's neediest students are able to pursue college degrees at the University of Mississippi. They have contributed a \$1 million gift to Ole Miss Opportunity, a need-based scholarship program.

"We recently talked with Chancellor (Dan) Jones about several ways that we could give back," Eli Manning said. "Abby and I were drawn to this program of helping people who might not be able to attend college otherwise. To us, it was a way of truly helping a lot of people."

Created earlier in 2010 to increase access to higher education in light of rising tuition costs, Ole Miss Opportunity ensures that eligible lower-income Mississippians will have financial aid support. Higher education is a critical factor in economic and societal progress, and U.S. Census Bureau data indicate only 31.7 percent of Mississippians 25 to 34 years of age have college degrees.

"Academics was very important to me when I was here. I studied and worked hard trying to make good grades. This giving back is really about giving someone a chance to enjoy Ole Miss," said Manning, who met his wife when they were both students. "The reason I came to Ole Miss over many other schools is because I thought if I never played a down of football, this is where I would want to go to school. That's why we had a focus on this (scholarship program)."

Chancellor Dan Jones said the Mannings' gift will provide "life-changing opportunities" and will be instrumental in moving the state forward.

"We are profoundly grateful to Abby and Eli Manning for their support of Ole Miss Opportunity," Jones said. "When I shared the significant need to increase access to higher education in our state, they made the commitment to help alleviate the financial challenges families face."

Abby McGrew Manning, a native of Nashville, earned a degree in 2005 and pursued a career in the fashion industry. New Orleans native Eli Manning followed in the footsteps of his parents, Olivia and Archie Manning, by attending Ole Miss, where he essentially rewrote the football team's record book, setting or tying 47 game, season and career records. He garnered a wealth of awards, such as the Southeastern Conference Player of the Year, Maxwell Award as the nation's best all-around player and the Johnny Unitas Golden Arm Award. He graduated in 2003.

The No. 1 draft pick in 2004, Manning led the Giants to win Super Bowl XLII in 2008, when he was chosen Most Valuable Player.

UM launched Ole Miss Opportunity after the College Board approved a tuition increase for the state's universities (6.5 percent for UM). The program fills the funding gap after all federal, state, institutional and private scholarships and grants awarded to a student have been considered. Eligibility criteria include a family adjusted gross income at or below \$30,000.

Besides scholarship support, the Mannings have helped the Friends of Children's Hospital raise \$2.5 million over five years for the Eli Manning Children's Clinics at the Blair E. Batson Hospital, part of the University of Mississippi Medical Center in Jackson. The recent "Evening with the Mannings" brought the total for the initiative to \$2.9 million.



- To increase access to higher education, UM created Ole Miss Opportunity to assist eligible Mississippi residents from lower-income families in pursuing college degrees.
- UM representatives studied need-based financial aid programs at other universities and believes Ole Miss Opportunity reflects the best practices identified in some of the country's most successful programs.
- In addition to criteria about family income, those eligible for Ole Miss Opportunity are required to have a high school grade-point average of 2.5 or higher.

Ole Miss Opportunity is open to accept gifts from other individuals and organizations by visiting www.umfoundation.com/makeagift, by calling 800-340-9542 or by mailing a check to the University of Mississippi Foundation with the name of the fund noted to P.O. Box 249, University, MS 38677.



New York Giants quarterback Eli Manning and his wife, Abby, make a \$1 million gift to support the Ole Miss Opportunity Fund, a need-based scholarship program. Created in 2010 to increase access to higher education in light of rising tuition costs, Ole Miss Opportunity ensures that eligible lower-income Mississippians will have financial support.

Barbara, Ed Krei of Oklahoma Step Forward with Support to Enhance Faculty Resources in School of Accountancy

The longtime teaching and mentoring contributions of University of Mississippi accountancy professors have inspired Barbara and Ed Krei of Oklahoma City, Okla., to commit a \$250,000 gift for faculty support to UM's Patterson School of Accountancy.

"My wife, Barbara, and I were led to provide this faculty support to pay tribute to former accountancy professors and deans Jimmy Davis and the late Gene Peery," said Ed Krei, who is a managing director of The Baker Group, one of the nation's largest independently owned securities firms specializing in investment portfolio management for community financial institutions. "These two educators made a great difference in many individuals' lives and careers, including my own. Their work and commitment as well as that of other accountancy professors put the school on the map."

The couple's gift establishes the Edward Krei Lectureship in Accountancy Endowment in the UM school, where the undergraduate and graduate programs are ranked in the top 20 in the nation, according to the Public Accounting Report. The endowment will provide salary supplements, research and creative activity support, and other support deemed appropriate by the accountancy dean.

"We are deeply grateful to Barbara and Ed Krei for this exceptional gift," said Mark Wilder, dean of accountancy. "We are proud of Ed's distinguished career and are humbled

"We are deeply grateful to Barbara and Ed Krei for this exceptional gift. We are proud of Ed's distinguished career and are humbled that he would provide this tremendous support in appreciation of his accountancy professors. ... Their investment in our faculty will provide benefits for generation upon generation of future accountancy students."

that he would provide this tremendous support in appreciation of his accountancy professors. Barbara and Ed's generosity and vision will help us continue building on the Patterson School's strong teaching and mentoring tradition, a trademark of our program and a vital reason for the successes we enjoy. Their investment in our faculty will provide benefits for generation upon generation of future accountancy students."

Davis, the Peery Professor of Accountancy, knows Krei as a former student and a professional.

"Ed Krei was a brilliant student who ex-



Dean of Accountancy Mark Wilder (from left) thanks Ed and Barbara Krei of Oklahoma City, Okla., for their gift to provide resources to faculty. UM Chancellor Dan Jones and Peery Professor of Accountancy James W. Davis join in expressing appreciation for the support.

celled in our program but also received a broad general education at Ole Miss. He seemed focused on success even in his student days," Davis said. "Ed's professional career has been fascinating to watch as he used his accounting education to best advantage. He made all the right moves and has kept the University of

exam in their states of residence – has served as a consultant to central banks in Europe and Russia as well as on the faculty of numerous banking schools, including the Graduate School of Bank Investments and Financial Management and the American Bankers Association's National Commercial Lending Graduate School.

"As I spoke at banking schools around the country, I gained an even greater appreciation for the accountancy professors at Ole Miss and realized the great commitments of time they give their students," Krei said. "In addition to the preparation they provide in the classroom, they are so involved in the placement of Ole Miss graduates in the industry. I certainly remember them helping me and others prepare for interviews."

Krei also was recently recognized by the Independent Bankers Association of Texas for his contributions to community banking in Texas. He has served on the boards of numerous civic and charitable organizations.

Barbara and Ed Krei met as freshman members of the Pride of the South Marching Band. She graduated from what is now the School of Applied Sciences and has enjoyed a career as a speech pathologist in the Putnam City Schools. The two are the parents of two grown children, Lauren and Barrett, both of whom live in Nashville and are in the healthcare field.

- Mark Wilder, dean of accountancy

Mississippi in mind. We are greatly indebted to him for his contributions to the program."

Krei works out of the Oklahoma home office of The Baker Group. A frequent leader of banking and investment conferences, Krei has been an invited guest speaker for the Federal Reserve Board of Governors, Office of the Comptroller of the Currency, Office of Thrift Supervision and the Federal Financial Institutions Examination Council, among others.

The 1973 graduate – one of several UM graduates to make the highest score on the CPA

Croft Institute Draws Exceptional Students to Study at Ole Miss

Eleven exceptional students began their undergraduate studies during 2010-11 at UM on prestigious scholarships as members of the Croft Institute for International Studies, and more will join them this fall.

The Croft Scholars each receive \$32,000 for four years of undergraduate study. The Croft Institute, created in 1997 through a \$60 million gift by the Joseph E. Bancroft Charitable and Educational Fund, ensures that students are prepared for leadership in business, public service, education and other fields with a deeper knowledge of an increasingly interdependent world. The Bancroft Fund also provides generous support on an annual basis to the Croft Institute.

Attesting to their abilities, these Croft Scholars have ACT scores ranging from 28 to 34.

"These are among the most promising and competitive students in the nation," said Kees Gispén, executive director of the Croft Institute. "They could have gone to pretty much any college or university in the United States, and we are fortunate to have them in our Croft program."

"These talented young men and women play a crucial role in sustaining the close-knit and challenging learning environment that is our hallmark. From those who have gone before them, we know that the Croft Scholars will not disappoint our high expectations. This is a unique opportunity for them, too."

All have declared a major in international studies and are members of UM's Sally McDonnell Barksdale Honors College.

FOR MORE INFORMATION
about the
Croft Institute for
International Studies, visit
www.croft.olemiss.edu/home.



The 2010-2011 freshman Croft Scholars include (from left front row) Sampada Kapoor of Ridgeland; Brad Gordon of Pascagoula; Grace Anne Boyd of Cordova, Tenn.; Colby Woods of Byhalia; and Alexandra Jones of Madison; and (second row) Patrick Fields of Byram; William Bumpas of Dyersburg, Tenn.; Walker Messer of Lucedale; George Rochelle of Norco, La.; and Jacob McGee of Lake.

What makes a **CROFT** SCHOLAR?

Grace Anne Boyd of Cordova, Tenn., graduated from Evangelical Christian School with a 4.0 grade-point average, ranking No. 2 in her class of 123 students. A National Merit Commended Scholar, she scored 33 on the ACT. She served as vice president of the National Honor Society and president of the Beta Club.

William Bumpas of Dyersburg, Tenn., finished among the salutatorian students in his class of 229 at Dyersburg High School. A National Merit Commended Scholar, he posted a 4.0 GPA and 33 ACT. A member of the National Honor Society, he attended the Tennessee Governor's School for the Humanities.

Patrick Fields of Byram ranked No. 1 in his class of 284 at Terry High School, posting a 4.19 GPA and 34 ACT. Recipient of U.S. Congressional Medals in bronze and silver, he was THS's STAR Student. A member of the National Honor Society, he served as vice president of the Beta Club.

Brad Gordon of Pascagoula finished No. 1 in his class of 231 at Pascagoula High School, with a 3.92 GPA and 31 ACT. A member of the National Honor Society and Beta Club, he served as co-captain of the Quiz Bowl Team.

Alexandra Jones of Madison ranked No. 1 in her class of 187 at Ridgeland High School with a 4.0 GPA. She posted a 31 on the ACT. She served as editor of the school newspaper, head of the Debate Team, co-president of the French Club and president of the Beta Club.

Sampada Kapoor of Ridgeland graduated sixth in her class of 187 at RHS with a 3.92 GPA. She scored 31 on the ACT. Winner of the Excellence in Academic

Competition Award, she belonged to the National Honor Society and Spanish Honor Society. Her

Jacob McGee graduated No. 1 in his class of 38 at East Rankin Academy. He posted a 4.0 GPA and 31 ACT score. A participant in Mississippi Governor's School and Mississippi Boys State, he won first place in the state in Latin I Academic Betterment Competition and was a member of his school's Academic Quiz Bowl Team.

Walker Messer of Lucedale graduated second in his class of 169 at East Central High School with a 4.0 GPA. He scored 28 on the ACT. A member of the band, he also served as president of the Spanish Honor Society and as publicity chair of the Beta Club. He attended the People to People Leadership Summit.

George Rochelle of Norco, La., ranked No. 3 in a class of 307 at Destrehan High School with a 4.0 GPA. He posted a 32 ACT. He attended Louisiana Boys State, won second place in Descartes competition at Mu Alpha Theta state convention and was a People to People student ambassador.

Susanna Rychlak of Oxford, a National Merit Finalist, graduated from Oxford High School with a 3.81 GPA, ranking eighth in a class of 195. She scored 31 on the ACT. A member of the National Honor Society, she was student body president.

Colby Woods of Byhalia graduated No. 1 in his class of 150 at Center Hill High School, posting a 4.0 GPA. He scored 31 on the ACT. He served as president of his class and the Science Club and attended Mississippi Governor's School and UM's Lott Leadership Institute.



Memory Garden Provides Place to Remember Ole Miss Students Who Have Lost Their Lives

When students lose their lives while enrolled at Ole Miss, it leaves a hole in the hearts of family, friends, classmates, faculty and staff.

To honor those students who died, two UM senior classes, administrators, alumni and friends donated funds to create the Ole Miss Memory Garden adjacent to Paris-Yates Chapel on campus. The recently completed landscaped courtyard is the brainchild of the Class of 2006 and Dean of Students Sparky Reardon.

"Ole Miss is such a family-oriented place that when we lose one student, everyone is affected," Reardon said. "The garden will provide a place where any member of the Ole Miss family may go to remember the lives of those who have gone before."

There was interest in the proposed Memory Garden project when it was started in 2006 but it saw a series of fits and starts. When Chancellor Emeritus Robert Khayat got involved and asked Jimmy Hill from Ripley and the rest of the Tippah County Alumni Club to help, that's when things really started to move.

Khayat proposed the Tippah County group help fund the Memory Garden complete with an eternal flame, fountain and a marble wall inscribed with the words "To Our Hearts Fond Memories" from UM's alma mater. Khayat's friend, Bobby Martin, chairman of the board and president of The People's Bank, promised the club \$10,000 for the project if the Tippah County Alumni Club would match the funds.

The challenge was met and money was

raised, but the initial price of the proposed garden was more than expected.

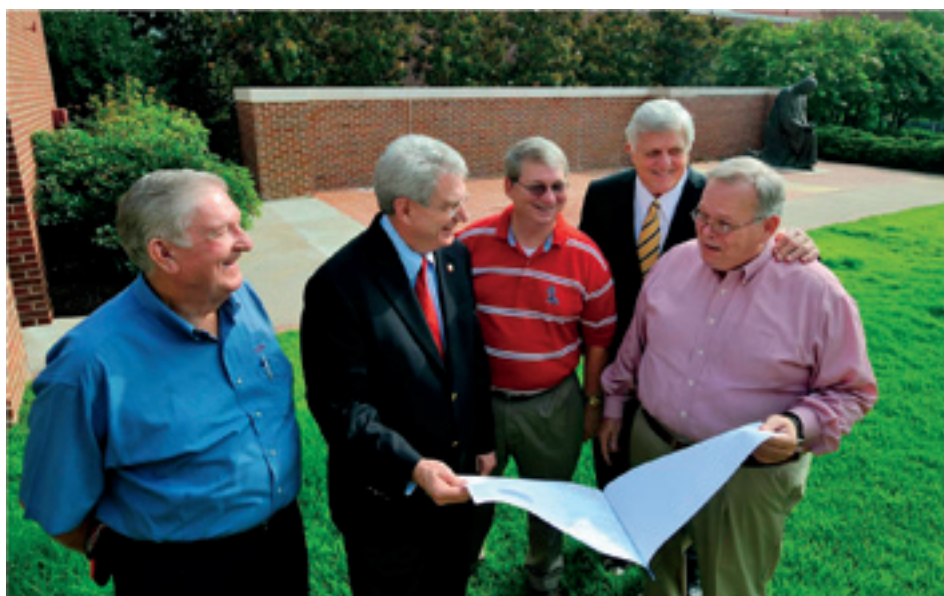
"There were other things on the griddle, and this got shoved to the back of the stove," Hill said. "But, it's on the front burner now."

Jennifer Southall, UM's director of annual giving, helped advise the Class of 2006 on its fund-raising efforts.

"It's good to see this project finally completed, and we are grateful to Mr. Hill and the Tippah County Alumni Club members for their support. Arabella Montgomery and Maureen Shorter, the 2006 class officers, worked really hard to get this project off the ground, and I know they – along with many others who contributed along the way – will be pleased that we now have a dedicated area on campus to remember members of the Ole Miss family."

The Senior Class of 2011 recently donated four benches to the garden and the current project is complete. When more funds are donated, the remainder of the proposed elements in the original plan can be added to the present garden.

Individuals and organizations interested in supporting the Memory Garden may contact Jennifer Southall at 662-915-6625 or email southall@olemiss.edu. Gifts also may be made by mailing a check to the University of Mississippi Foundation, P.O. Box 249, University, Miss. 38677 with Memory Garden noted in the check's memo line or by visiting www.umfoundation.com/makeagift.



Jimmy Hill of Ripley (from left), UM Chancellor Dan Jones, Charles Davis of Ripley, Chancellor Emeritus Robert Khayat, and Dean of Students Thomas "Sparky" Reardon look over the drawing illustrating all the elements planned for the Memory Garden behind the Paris-Yates Chapel. Hill and Davis represent the Tippah County Alumni Club, which made a major gift to the project.

Charitable Lead Trusts

Do you want to benefit from the tax savings that result from supporting the University of Mississippi Foundation yet don't want to give up any assets that you'd like your family to receive someday? You can have it both ways with a charitable lead trust.

How It Works

You give assets to a trust that pays the UM Foundation an income for a number of years, which you choose. The longer the time period, the better the gift tax savings for you. When the term is up, the remaining trust assets go to your family or other beneficiaries you select.

This is an excellent way to transfer property to family members down the line (typically children and grandchildren) at a minimal tax cost. This type of charitable lead trust (also called a nongrantor or family lead trust) is especially appealing to UM supporters who are financially comfortable enough that they can forgo investment income on some assets.

Fixed or Variable Charitable Payments?

A charitable lead trust can make payments in one of two ways: A charitable lead annuity trust pays a fixed amount each year to the UM Foundation, whereas a charitable lead unitrust (the less common type) pays a variable amount each year based on the value of the assets in the trust. With a unitrust, if the trust's assets go up in value, the payments to our organization go up as well. On the other hand, if the assets decrease in value, so do our payments.

We Can Help

Contact Sandra Guest, vice president of the UM Foundation, at 662-915-5208 or sguest@olemiss.edu for more information about this type of gift.

2 + 2 Scholarship Fund for DeSoto Center Students Reaches Milestone



The 2+2 Endowed Scholarship awarded to students who attend the DeSoto Center campus for all four years – two years with Northwest Mississippi Community College and two years with the University of Mississippi – has surpassed \$1 million level.

The fund-raising milestone was announced by Northwest President Gary Lee Spears and Associate Vice President for Development Sybil Canon. Putting the fund for DeSoto County residents over the million-dollar mark was a \$112,000 gift to the scholarship initiative from the estate of Elinor Herrington, the mother of Mike Herrington of Olive Branch, current member and former president of the board.

UM Chancellor Emeritus Robert Khayat was an invited guest at the Northwest Foundation Board of Directors meeting and congratulated the group on the fund-raising partnership's success. He also offered words of encouragement and guidance, as the board continues its efforts.

"This type of scholarship is unique, outstanding and trail-blazing, to combine the fund-raising efforts of a four-year (university) and a community college," said Khayat.

The brainchild of Canon; Gloria Kellum, former UM vice chancellor emerita for university relations; and Bonnie Buntin, UM-DeSoto Center dean, the scholarship endowment now

totals \$1.1 million. Among donors to the endowment are the Maddox Foundation; the cities of Southaven, Olive Branch and Hernando; BancorpSouth; DeSoto County banks First Tennessee, Merchants and Farmers, First Security, Community, BankPlus, Trustmark, Sycamore and Renasant; Kreunen Development Company; Shannon Lumber Company; FedEx; DeSoto Economic Development Council; and numerous individuals committed to the idea of making a four-year degree available to DeSoto County residents in their own community.

"I am grateful to all of the members of the Northwest family who have made this scholarship what it is today," said Spears. "So much hard work and dedication from our administration and friends of the college came together to make all of this possible."

While Dr. Robert and Shirley Seymour and their daughter, Holly Renee Seymour, of Hernando, headed up a steering committee that began the solicitation process for this scholarship endowment, Herrington and his wife, Debbie, spearheaded what would become the annual 2+2 Scholarship Golf Tournament at Cherokee Valley in Olive Branch.

Tournament steering committee member Marty Haraway approached Aubrey Patterson, president and CEO of BancorpSouth, to be the \$10,000 title sponsor for the tournament, and BancorpSouth has honored that commitment for seven years. The successful tournaments have contributed approximately \$200,000 to

this scholarship initiative.

"With the proceeds from the golf tournaments and the most recent contribution from Elinor's estate, the Herringtons have been directly responsible for almost one third of this initiative," said Canon.

Three Northwest freshmen and three Ole Miss juniors received the 2+2 Endowed Scholarship this year: from Northwest, psychology major Magen Jendras of Lake Cormorant, elementary education major LeAnne Steelman of Olive Branch and business administration major Brooke Gustafson of Hernando; and from Ole Miss, criminal justice major Joshua Sharpe of Ashland, social work major Lindsey Robbins of Lake Cormorant and elementary education major Whitney Bernardini of Southaven.

Named 2+2 endowments were awarded to seven Northwest students: the Maddox Foundation DeSoto Center Scholarship, sophomore nursing majors Steven Cuzzilla of Southaven and Sheri Summerford of Olive Branch; for the Kathryn Anne Kreunen Scholarship, freshman education major Wes Kennedy of Southaven; for the City of Southaven Scholarship, freshman nursing major Kayla Gross of Southaven; for the City of Hernando Scholarship, freshman psychology major Elizabeth Wright of Hernando; for the City of Olive Branch Scholarship, freshman graphic design technology major Taylor McGhee of Olive Branch; and for the Albert Broadway Scholarship, freshman business administration major Kaitlyn Fisher of Southaven.



Northwest President Gary Lee Spears (second from left) joins UM Chancellor Emeritus Robert Khayat (far right) in congratulating Associate Vice President for Development Sybil Canon (from left); Shirley Seymour, Dr. Robert Seymour and Holly Renee Seymour, all of Hernando; member and former president of the Northwest Foundation Board of Directors Mike Herrington of Olive Branch; Northwest Dean of the DeSoto Center Richie Lawson; and UM Dean of the DeSoto Center Bonnie Buntin (recently retired) for their efforts in leading the 2+2 Endowed Scholarship to its \$1 million level.

Strojny Couple Makes Commitment to Support Ole Miss Business Faculty with New Endowment

Business professionals Michael and Jane Strojny of Biloxi have remained committed to their alma mater, the University of Mississippi, for more than four decades. When they learned of the initiative to build resources for faculty support, they stepped forward with a \$100,000 gift.

The Strojny Faculty Support Endowment will provide funds for salary supplements, research, creative activity and program support in the UM School of Business Administration. The gift – added to others they have made to establish business school scholarships – is their continuing tribute to the career preparation they received as students as well as to the help they were given as young alumni.

After the two graduated from Ole Miss, Michael Strojny completed service as a Green Beret in the U.S. Army during Vietnam. Since the nation was experiencing an economic downturn, the Strojny's traveled to different parts of the country, but no jobs were to be found. Michael called then-Professor and Dean of Men Frank Moak, who said, "Come on home, Mike. We'll help you." The couple returned to Oxford where university contacts had lined up several job interviews, resulting in a job and a future.

...the Strojny's traveled to different parts of the country, but no jobs were to be found. Michael called then-Professor and Dean of Men Frank Moak, who said, "Come on home, Mike. We'll help you."

"I made a vow, then, never to leave Mississippi," said Michael, a native of Washington, D.C. Michael and Jane founded Strojny & Strojny Financial Services on the Mississippi Gulf Coast. "Ole Miss gave both Jane and me a great start in life. Ole Miss people networked and helped us build our business. We feel we owe it to the university to help others benefit from the same educational and support opportunities."

Michael said he and Jane share a goal of strengthening the School of Business Administration for future generations.

"The business school is very important to us, and we want to give back to the school for putting us on the right track. I asked the business dean what would help the school, and the answer was faculty support. Providing faculty support may not be as glamorous as other means of support, but to compete with other universities, Ole Miss must have resources to hire outstanding faculty. Students benefit from

great faculty – just as Jane and I did – and we want to help meet this need," he said.

The couple's longtime support has already made an impact on the business school.

"Jane and Mike Strojny have gone above and beyond to mentor and engage our students and therefore provide value that will serve them well the rest of their lives," said Ken Cyree, dean of business administration. "Likewise, their recognition that faculty provide valuable education to ready our students to compete in the marketplace is both inspiring and laudable.

"We are extremely appreciative of their commitment and of the impact that their gift will have in providing the margin of excellence in the business school. Their generosity will help us attract and retain great faculty, who will prepare our students for meaningful careers. We value Jane and Mike's friendship and are grateful for their support of the business school

and of Ole Miss," the dean said.

Michael Strojny earned an undergraduate degree in business administration from UM and later received a master's degree from the University of Southern Mississippi and a specialist's degree from William Carey College. Jane Strojny earned an undergraduate degree in education from UM and a master's in education from USM. The two met as Ole Miss freshmen, when one of Michael's friends sought his help in asking Jane for a date – only Michael and Jane ended up dating.

Strojny & Strojny Financial Services – which offers a broad range of services, including tax consulting and compliance, and accounting and business consulting as well as other financial services – has offices in Biloxi, Gulfport, D'Iberville, Ocean Springs, Poplarville and Mobile, Ala. Clients range from institutions in the technology, manufacturing, non-profit, financial, real estate development, management



Jane and Michael Strojny of Biloxi, enthusiastic Ole Miss fans, provide another gift to support the School of Business Administration. The most recent gift focuses on faculty support, which is a current priority across the academic community.

and service industries to local businesses and individuals. The couple started the business in 1975 at their kitchen table, where they first worked on the tax returns of friends and neighbors. Before that, they were teachers, a role that also influenced their decision to support faculty.

"We find it unfortunate that teachers are typically paid less than other professionals," said Jane Strojny, a native of Pontotoc County. "It is difficult to recruit the 'best and the brightest' in a field that sorely needs them when pay is under par."

Another inspiration for their gift is their great affection for Ole Miss.

"We met and fell in love at Ole Miss," Jane said. "Our daughter met her husband there. Mike and I have attended at least one football game a year since we graduated, even when Mike was in Vietnam. Now we fly our plane to almost all the games, own a condo there and hang out in Oxford and in the Grove with our family and friends. Our tent site near the Lyceum won a generator for being one of the best tailgates last football season, mainly due to the contributions of our Oxford friends."

The Strojny's have two grown children: Daughter Jennifer, who holds a master's in business administration from Ole Miss, and her husband, Kerry Milligan, both work at Strojny & Strojny. Kerry is a certified financial planner. Son Michael, a graduate of the Citadel, works for Boeing in Charleston, S.C. His wife, Elizabeth, is a registered nurse. The Strojny grandchildren are Grace Milligan, 4; Collin Milligan, 2; William Strojny, 9; Jackson Strojny, 8; and Nicholas Strojny, 6.

Ole Miss Dedicates The ROBERT C. KHAYAT LAW CENTER

To those who contributed to the Robert C. Khayat Law Center, our thanks ...
“We shape our buildings; thereafter they shape us.” Winston Churchill once spoke those simple but poignant words, which seem appropriate when describing the new home for the University of Mississippi School of Law.

Your exceptional generosity has shaped the beautiful and distinguished Robert C. Khayat Law Center that stands as a commanding landmark on the University of Mississippi’s Oxford campus. Current law students and generations to come will benefit from this center for legal education – a center that trains individuals to excel as lawyers, leaders, scholars and agents of change. What happens within our classrooms, courtrooms, library, legal clinics and offices of this state-of-the-art learning facility will impact communities, the state of Mississippi and our society at large. The open design of this Leadership in Energy & Environmental Design-certified building will promote meaningful educational experiences and collaborations, continually enhancing our strong, vibrant School of Law community.

The new law center also is enriching clinical experiences for students as well as conferences for lawyers, judges, and legal scholars. The American Bar Association already has hosted a national conference on environmental justice in our new Khayat Law Center, and we are confident it will be the site of many more prominent meetings addressing issues important to our nation and beyond.

What inspired you to provide resources for the Khayat Law Center? Perhaps the impact the School of Law has had on your own life and career moved you to give back so that others could have similar opportunities. Likely you are an individual who knows the important role of education, and particularly legal education, to our society’s growth and development. Perhaps you provided a gift to acknowledge the school’s impact on someone close to you. Many gifts certainly paid tribute to the influence of Chancellor Emeritus Robert C. Khayat, a former law professor, who as a mentor has helped shape many lives and as a leader has helped define the University of Mississippi’s place among great public universities in our nation. Other gifts reflected the far-reaching effect of our dedicated faculty and staff on the lives of students.

Whatever your inspiration, we thank you. Like the one before it, this building is a living testament to our commitment to excellence in legal education.

We are profoundly grateful not only for your generosity but also for your vision. Thank you for shaping the future.



I. Richard Gershon, Dean of Law

“WE SHAPE OUR BUILDINGS;
THEREAFTER THEY SHAPE US.”

WINSTON CHURCHILL



Above: The Robert C. Khayat Law Center is the stunning home of the UM School of Law and stands as a testament to a deeply held commitment to excellence in legal education and reflects the extraordinary generosity of alumni and friends.

Right: UM Chancellor Dan Jones (from left), and Chancellor Emeritus Robert Khayat react to U.S. Sen. Roger Wicker’s comments on “Khayat Man,” comparing Robert Khayat to Superman.



Top Left: Chancellor Dan Jones (from left) visits with alumni Sherman and Celia Muths of Gulfport at the Khayat Law Center dedication. Sherman Muths is a law alumnus.

Top right: Robert Khayat Jr. of Atlanta (from left) and his wife, Susannah, look over the crowd of alumni and other friends attending the dedication. Grandchildren Molly, Ben and Betsey Khayat also enjoy the event.

Left: The library in the Khayat Law Center is named in honor of Renee and John Grisham of Charlottesville, Va., for their extraordinary support.

Illinois Couple Creates First-ever Integrated Marketing Communications Scholarship at UM

Two accomplished communications professionals from Glenview, Ill., have committed funding for the first scholarship endowment for students pursuing degrees in integrated marketing communications through the University's Meek School of Journalism and New Media.

Mary E. and John B. Thomas have created the Thomas Family Scholarship Endowment to pay tribute to John's parents, Suzanne Jones Thomas of Chicago and the late Arthur W. Thomas, Jr., as well as provide assistance to students. The \$100,000 gift includes a match by the Abbott Fund, the philanthropic foundation of Abbott. John is the vice president for investor relations and public affairs at Abbott, and Mary runs her own communications consulting firm.

Arthur Thomas, a graduate of the Medill School of Journalism at Northwestern University, came to Mississippi in the 1950s to serve as the managing editor of the *Meridian Star* and met his wife, a Meridian native. Although the family soon moved to Chicago for the patriarch to pursue a public relations career, he introduced his son to the Ole Miss journalism program.

"My father inspired me to pursue a career in writing," John Thomas said. "Communications were always an influence in our home, and I developed an interest in the field. My father brought me to campus, and I fell in love with the place. Ole Miss changed my life in ways I could never fully repay.

"Mary and I strongly believe in the direction the journalism and new media program is taking," Thomas said. "We understand the value of it, providing students a foundation for clear writing and thinking. Ole Miss has always had one of the finest journalism programs in the country, with great professors who help students develop core skills that carry them throughout

their professional lives."

Thomas graduated second in his journalism class in 1985. He co-founded *The Oxford Times* newspaper on a shoestring and sold his half a year later. Meredith Corp. recruited him to join its *Metropolitan Home* magazine staff in New York, and he later transferred to Meredith's home base in Des Moines, Iowa, as an editor of *Better Homes & Gardens*.

"John Thomas was one of our best students during his tenure here...," said Will Norton, dean of the Meek School. "It is fitting that the first scholarship for integrated marketing communications in the Meek School would come from one of our graduates who has excelled as a professional in communications. John Thomas represents the kind of quality professionals who have graduated from this program through the decades. We are deeply grateful to Mary and John Thomas for this support."

Thomas said Norton and Samir Husni, director of UM's Magazine Innovation Center, have been longtime mentors and friends. Norton worked to add the integrated marketing communications degree to the curriculum. This field teaches students how to understand, engage, persuade and activate consumers by coordinating or integrating all marketing communications strategies, such as advertising, mass media, social media, sales promotion, public relations and direct marketing.

Mary and John Thomas met while serving on the *Better Homes & Gardens* staff. She received an undergraduate degree from Drake University and earned a master's in integrated marketing communications at Northwestern's Medill School. John Thomas went on to serve as a public relations professional for two Chicago companies before joining Abbott in 1995.



John and Mary Thomas of Glenview, Ill., create the first-ever scholarship to help integrated marketing communications majors in UM's Meek School of Journalism and New Media. The scholarship pays tribute to John Thomas' parents.

Abbott is a global health care company devoted to the discovery, development, manufacture and marketing of pharmaceuticals and medical products. The company markets its products in more than 130 countries. Thomas also serves as president of the Abbott Fund, which provides grants to promote science, expand access to health care and strengthen communities around the globe.

The Thomas Family Scholarship will be awarded to students majoring in integrated marketing communications or journalism, with first preference given to students from Chicago or Milwaukee, Wis., the Thomases' hometowns.

Mary and John Thomas are the parents of three children: Emma, Kara and J.T.



Pride of the South Band Scholarship Honors

Martha Dale Stock

Photo of Martha Dale Johnston Stock as a student from the yearbook

When Edwin W. Stock Jr. wanted to do something special for his wife, Martha Dale, he decided to create an endowed scholarship.

The Martha Dale Johnston Stock Scholarship fund is earmarked for full-time Pride of the South marching band members. Martha Dale Johnston was a majorette for three years, played clarinet in the marching and concert bands, and graduated with a music degree in 1959. The scholarship

honoree was active in Mortar Board, the Committee of 100 and Phi Mu sorority.

Martha Dale Stock suffers from Lewy Body disease and her husband, a friend of Ole Miss, chose the band as a way to honor her. The couple met while they were graduate students in Virginia.

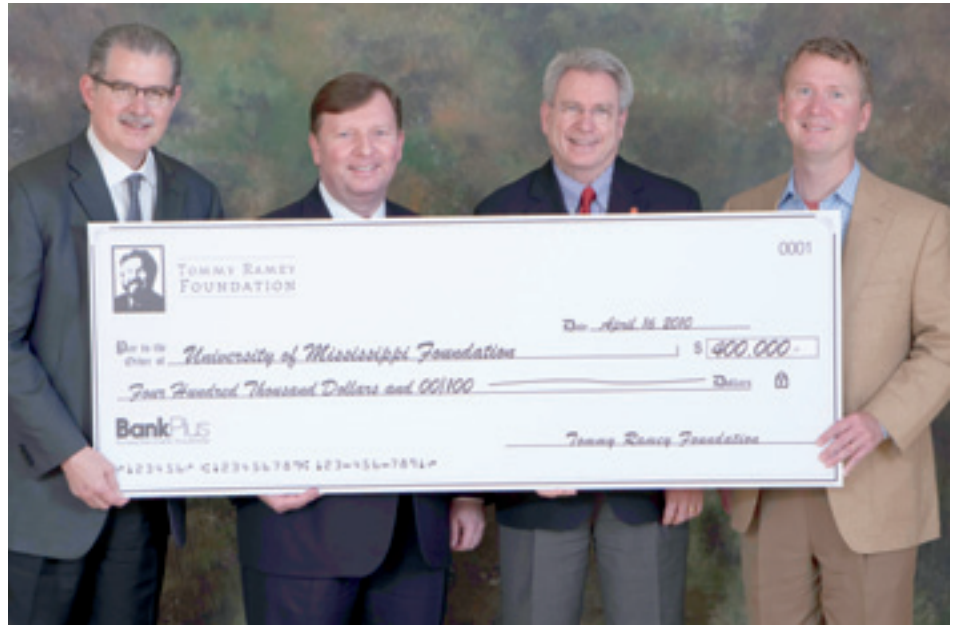
"She loved the university," Edwin Stock said. "She was always ecstatic to be back on campus, and when we came back for football games, she always concentrated on the pre-game show and halftime.

Scholarship Gift Pays Tribute to Tommy Ramey, Assistance Provided in Three Areas of Study

The Tommy Ramey Foundation has endowed scholarships at three Mississippi universities totaling \$1 million, with the goal of educating and inspiring the state's next generation of marketing and culinary professionals.

A \$400,000 gift went to the University of Mississippi, where an endowment was created to provide scholarships to Mississippians. Specifically, the scholarships are for those pursuing study related to the fields of advertising, public relations and culinary arts – some of the passions of the late Tommy Ramey, an advertising executive.

"We are delighted that these gifts will permanently endow Tommy Ramey Scholarships at Jackson State, Mississippi State and Ole Miss," said Bill Ray, chief executive officer of BankPlus and chairman of The Tommy Ramey Foundation. "Tommy always had an interest in seeing Mississippi students succeed, and we are pleased to help these scholarship recipients reach their educational and career goals."



UM Chancellor Dan Jones (second from right) accepts a presentation check from Ramey Foundation board members (from left) Stephen Edds, William Ray and Chris Ray, all of Jackson. The generous scholarship endowment is designed to help students pursuing careers in advertising, public relations and culinary arts.

"Tommy always had an interest in seeing Mississippi students succeed. We are pleased to help these scholarship recipients reach their educational and career goals."

- Bill Ray

The Jackson-based foundation was established by Ramey's friends, family and colleagues.

"We are deeply grateful to all those who worked to establish this foundation and make these scholarships possible," said Wendell Weakley, president and chief executive officer of the UM Foundation. "Extending educational opportunities to young people is certainly a meaningful way to pay tribute to someone's life. Tommy Ramey built a strong legacy through the priorities he established in his life. His commitment to his community and this state will live on through

the students who receive these scholarships."

A native of Louisville, Ky., and a graduate of Mississippi State University, Ramey died in 1999 at the age of 41. The visionary businessman had founded The Ramey Agency in 1985, then built it into the second largest advertising agency in the state. Colleagues said Ramey's "larger-than-life" personality left a mark not only on the Mississippi advertising community but also on everyone who encountered him. His efforts to instill effective advertising led The Ramey Agency to be recognized with numerous

prestigious awards as well as long-standing client relationships that continue today.

Ramey's passion for philanthropy could be seen through his commitment to serving the greater Jackson community, according to his biographical sketch provided by the foundation. He utilized both his own personal resources and those of the agency's to assist organizations, such as Big Brothers/Big Sisters, Operation Shoestring, New Stage Theater and Liberty Village Playground. Today, through his example, employees of The Ramey Agency are given additional paid days each year to volunteer for the charitable cause of their choice.

Ramey also held memberships in the Young Presidents Organization, Northminister Baptist Church and Annandale Golf Club.

"She had close ties to the University of Mississippi and really close ties to the band," he said. "She especially liked the marching band. She reveled in the friendship and the camaraderie the band provided."

Highlights of her time with the Pride of the South were appearances at the 1958 World's Fair in Brussels, Belgium, and the World Music Festival in Holland. Only 13 years after the end of World War II, Europe was still scarred, but the Pride of the South attracted attention wherever it performed.

Stock said his wife was usually pretty mild-mannered – until she got riled up. One football game, as she and other majorettes gathered for the pre-game show, a fan decided Martha Dale's little cap from her uniform would make a perfect souvenir. He jumped onto the field, grabbed her cap and started running.

"She took off after him, used her baton in a chokehold and took back her hat," he said. She returned to her place on the field to the sound of cheering fans.

The Stocks introduced their son, Edwin W. Stock III, to Ole Miss. A granddaughter, Amanda Stock, earned a nursing degree from UM in May. A grandson, Evan Stock, is a senior business student.

The Stock Scholarship Fund is open to receive gifts. Anyone interested in supporting the fund may send a check with the scholarship fund noted to the University of Mississippi Foundation, P.O. Box 249, University, Miss. 38677, call 800-340-9542 or visit www.umfoundation.com/makeagift.

Bowman Family's Gift Reflects Devotion to University and Enhances Scholarship, Faculty, Athletics Support

Audra and Phillip Bowman of Ridgeland first met at a New Year's Eve event that Phillip and his friends organized to raise funds for a local charity. After marrying they have continued to make "giving back" a priority in their lives, providing support to educational, religious and community groups, including the University of Mississippi.

The alumni have established the Bowman Ole Miss First Scholarship to assist a Jackson Academy student who plans to pursue a degree from UM's School of Business Administration as well as the Bowman Business School Fellows Fund to help build faculty support. They have joined the Vaught Society, which provides resources for athletics facilities, coaches and student-athlete scholarships and have previously committed a planned gift to create a scholarship endowment for student-athletes.

"Outside of our church, Bellwether, the two institutions Audra and I love are Jackson Academy and the University of Mississippi," said Phillip Bowman, a JA Board of Trustees member. "When I learned about the Ole Miss First scholarship program from Chancellor Emeritus Robert Khayat, it seemed like the ideal vehicle to help a JA student experience Ole Miss. Audra and I both had great educational experiences at Ole Miss, and the university is constantly adding new, incredible programs."

Phillip Bowman, owner of Specialty Metals, Inc., earned an undergraduate degree in business administration with a major in marketing, while Audra Bowman earned undergraduate and graduate degrees in communicative disorders. The mentoring aspects of the Ole Miss First program appealed to them.

"The entire Ole Miss First Scholarship program is really meaningful, and it would be great to see other scholarships modeled that way," said Phillip Bowman. "During my life I have been blessed to have strong mentors, beginning with my late father, who was an ethical businessman and entrepreneur, and through sports, college, business and community activities. An encouraging mentor can make a tremendous difference in a person's life."

Dean of Business Ken Cyree said, "We greatly appreciate the support from such dedicated alumni as Audra and Phillip Bowman. Their generosity will allow us to attract outstanding students and have those students taught by accomplished professors. Through their philan-

thropy, we will help prepare students to compete in the business world."

The other part of the Bowmans' gift to the business school supports faculty.

"The business school leadership knows where private gifts can be best used, and the current priority is attracting faculty support to recruit and retain outstanding faculty members," Bowman said. "That is certainly an area that's extremely important. In addition, Ole Miss

The family's support of education is a long-held value.

"Education was really important to my parents...", said Phillip Bowman, who with his sister, Amy Bowman of San Francisco, started a scholarship fund at JA in memory of their parents, the late Faye and Harmon Bowman. "Academics, of course, should be very strong, but there are so many aspects of a school that enhance a person's life. I think JA and Ole Miss both provide a well-



Audra (from left), Wesley, Amelia Dare, Blaine and Phillip Bowman establish an Ole Miss First Scholarship for a Jackson Academy student to attend Ole Miss, as well as designate gifts for the Business School and athletics.

sporting events are something my family and I have enjoyed as long as I can remember. I think the Vaught Society is a great place to provide assistance to Ole Miss."

When thinking of how much their alma mater means to them, Bowman said he and Audra felt that a gift to the Vaught Society would be put to work right away, making an impact on athletics needs.

"Audra and Phillip Bowman continue to be such loyal supporters of Ole Miss Athletics," said Danny White, senior associate athletics director and executive director of the UMAA Foundation. "This family understands that our vision to elevate our athletics programs to nationally competitive levels can be realized with the strong support of our alumni and friends. We deeply appreciate their support of the Vaught Society as well as their planned gift for student-athlete scholarships."

rounded package of valuable experiences."

Bowman became the first JA alumnus to chair the school's board of trustees, and he provided leadership on a capital campaign for the school's performing arts center. Audra Bowman is an active volunteer for numerous JA programs, and the couple's children – Blaine, 11; Wesley, 9; and Amelia Dare, 6 – all attend JA.

"Phillip and I feel blessed that we are able to provide this support to Ole Miss," said Audra Bowman. "We hope these resources will help students take full advantage of all the opportunities that are available at Ole Miss to build meaningful careers and lives."

For more information on the Ole Miss First program or providing faculty support through the Barnard Initiative, visit www.umfoundation.com and click on "current initiatives" or call the UM Foundation at 800-340-9542.

Liberal Arts Alumni Board Expresses Support for Faculty with \$130,000 Gift

When an enlightened group of UM alumni leaders partner to improve faculty support in the College of Liberal Arts, great needs are met.

Members of the Liberal Arts Alumni Chapter Board of Directors have personally committed \$130,000 to help ensure resources are available to recruit and retain outstanding teachers. The support comes as the College of Liberal Arts and the university at large underscore the need for private funds to undergird the work of professors who define our academic reputation.

"I vividly recall the professor who changed my academic life. He didn't convince me to shift majors or set me on a new career path, but he taught me that exploring very different subjects was exciting," said Dennis Moore of Washington, D.C., a board member and deputy managing editor of *USA Today*. "When Dean Hopkins told a group of alumni that it is difficult for Ole Miss to match or exceed salaries offered by other southeastern universities, I thought of that professor and was convinced that I and others must help financially to attract and retain the best."

Other board members are Alon Bee of Jackson, James Herndon of Oxford, Dr. Gene Norris Howell of Ripley, and Dennis Watts and Deanne Mosley, both of Madison.

"My daughter, Paige, my son, Blake, and I are all graduates of the College of Liberal Arts and have significantly benefited from our respective educations," said Bee, Regions Bank City President-Metro Jackson. "Our decision to support our gifted faculty was made to impact future students educated at Ole Miss for years to follow."

Glenn Hopkins, dean of liberal arts, applauded the board's united support.

"This gift from the Liberal Arts Alumni Chapter Board of Directors is extraordinary," he said. "This initiative is vital to recruiting and retaining the excellent faculty that our students deserve, and the board members' generosity has set us on the path to meet our goal of an endowment of \$2 million. I extend my heartfelt gratitude to each member of the board."

Renowned NY Philanthropist Honors Family, Friends by Funding Speaker Series at University

Thanks to a \$200,000 gift from a National Humanities Medal winner, the names of two visionaries in the study, teaching and preservation of American history grace a new UM lecture series.

With an extraordinary record of supporting the humanities, New York philanthropist and investor Richard Gilder has created the Gilder-Jordan Speaker Series in Southern Cultural History at UM. As a result of the lectureship – which honors Gilder's family as well as his friends, Dan and Lou Jordan of Charlottesville, Va. – UM will begin inviting renowned scholars to campus this year for lectures and discussions with students, faculty and the community at large.

"No individual has done more to support teachers of American history and to enhance an appreciation of our national heritage than Dick Gilder," said Dan Jordan, who served from 1985 through 2008 as president of the Thomas Jefferson Foundation, which owns Jefferson's Virginia home, Monticello. "Lou and I are deeply honored to have our family name linked at our alma mater with that of Dick Gilder, for whom we have great admiration and affection."

Gilder is a founder and chief executive officer of Gilder Gagnon Howe & Co., an employee-owned investment firm, and is the president of the Gilder Foundation. In 2005 he received the National Humanities Medal, which is presented by the U.S. president to honor individuals and organizations whose work has deepened the nation's understanding of the humanities or helped expand access to important humanities resources.

Gilder is a founding trustee of the Central Park Conservancy; trustee of the Thomas Jefferson Foundation, American Museum of Natural History, Pierpont Morgan Library and the New-York Historical Society; and trustee emeritus of the Manhattan Institute for Policy Research.

With Lewis E. Lehrman, Gilder endowed the Lincoln Prize in Gettysburg College's Lincoln and Soldiers Institute and co-founded the Gilder Lehrman Collection, the Gilder Lehrman Institute of American History, Yale University's Gilder Lehrman Center for the Study of Slavery, Resistance and Abolition, and other organizations. The Richard Gilder Graduate School was created at the American Museum of Natural History.

Although Gilder did not attend Ole Miss, his friendship with the Jordans and family relationships led to his support. Gilder's grandfather, Joseph Moyse, was enrolled at the university around the turn of the 20th century. Gilder's wife, Lois Chiles, who has enjoyed a career as an actress, model and philanthropist, has two nieces who have attended Ole Miss.

"In early conversations with Mr. Gilder, it was apparent he had the highest regard for the Jordans, as well as an interest in supporting history programs at Ole Miss," said Chancellor Emeritus Robert Khayat. "We are fortunate to be among the distinguished organizations supported by Mr. Gilder and to have the opportunity to recognize the remarkable lives of Dan and Lou Jordan. The Jordans are among our most eminent and respected graduates."

Both the Jordans earned undergraduate and graduate degrees in history from Ole Miss, and Dan received a doctoral degree in history from the University of Virginia. During his time as president of the Thomas Jefferson Foundation, Dan Jordan revolutionized the organization's efforts in fundraising, historic preservation, scholarship, education and community outreach. Lou Jordan, an artist, also contributed significantly to Monticello's programs and activities.



Dan Jordan, former president of the Thomas Jefferson Foundation, and his wife, Lou, (from left) visit with Lois Chiles and Richard Gilder at an event at Jefferson's home, Monticello. The Gilder-Jordan Speaker Series in Southern Cultural History honors Gilder's friends, the Jordans, as well as his own family. Gilder's grandfather, Joseph Moyse, attended UM at the turn of the 20th century.

Former 1959 Ole Miss Football Co-Captain Ken Kirk Leaves Estate Gift to Alma Mater



Ken Kirk

The late Ken Kirk was a formidable force on the legendary 1959 Ole Miss national championship football team as a player and co-captain, and he never forgot his experiences or teammates. Through an estate gift of more than \$726,000 to the football program, he has secured student-athlete opportunities for other young men.

"The love that Ken Kirk had for Ole Miss football is beyond measure," said Director of Collegiate Athletics Pete Boone. "The friendships that he made during his years at Ole Miss with Bobby Ray Franklin, Robert Khayat, Warner Alford and so many others were an extremely important part of his life. This gift will ensure that his name will remain with Ole Miss football in perpetuity."

Kirk of Tupelo enjoyed a career as a real estate developer, property manager and construction company owner before his 2009 death. His gift is designated for various facets of the football program.

"Ken Kirk and the 1959 Rebels propelled the Ole Miss football program into the national spotlight and set a new standard of excellence," said Head Football Coach Houston Nutt. "Now through his estate, he has created a lasting legacy by strengthening a program that will impact the lives of student-athletes for many generations to come. We are both inspired and deeply grateful for his commitment to our program."

Graduating in 1960 with an undergraduate degree in finance, Kirk came from an Ole Miss family with two other football lettermen. His father – the late Dr. Robert D. Kirk Sr. of Tupelo, who became a well-known physician – was a 1920 graduate and played both football and baseball. Bob Kirk III of Miramar Beach, Fla. – his nephew who earned undergraduate and graduate degrees in business – played defensive end in the mid-1970s.

"Ken's number one passion in life was Ole Miss and its football program, and he played football with a class group of men," said Bob Kirk, also a longtime Ole Miss donor. "Ken started giving back to Ole Miss when the Loyalty Foundation (now the UMAA Foundation) was first established. Ole Miss is a place our family has loved and cherished; we could never give back in proportion to the joy it has given us."

Chancellor Emeritus Robert Khayat and Kirk became teammates and roommates in 1956 and remained lifelong friends.

"Ken had been selected for the All-American high school football team and was a dominant player," Khayat said. "One indication of his extraordinary character was evident when he came to Ole Miss expecting to continue playing fullback, only to be told by Coach John Vaught that he was to play center and linebacker. He made the transition seamlessly and was so outstanding that his teammates chose him to be a permanent co-captain of the 1959 team."

Kirk was on the 1959 Ole Miss team that went 10-1 and gave up only 21 points all season. After defeating LSU in the Sugar Bowl, the team was declared national champions by three selectors. Kirk was drafted by the Chicago Bears in the 1960 NFL Draft. He also played for the Pittsburgh Steelers and the Los Angeles Rams.

"This gift to Ole Miss is totally consistent with Ken's generous personality and fulfilled a promise he made early in his business career," Khayat said. "He was soft-spoken, astute, respected and loved by those who knew him."

Among other family members who attended UM were Kirk's two brothers, Albert M. Kirk of Tupelo and the late Dr. Robert D. Kirk Jr. of Belden, as well as his two sons, the late Kenneth Henry Kirk Jr. of Charlotte, N.C., and Dixon Kirk. Dixon resides in Jackson with his wife, Brette, and their two children, Kendall and John Sharp Kirk.



Ken Kirk



VAUGHT SOCIETY
Investing In Championships

WHAT IS THE VAUGHT SOCIETY?

Coach John Vaught is one of the most recognizable names in the history of college football due to the extraordinary level of success he enjoyed while at Ole Miss. During his tenure, the Rebels experienced heights never before seen in the history of the program. As such, the Vaught Society carries his namesake.

The Vaught Society was started in 2005 as an exclusive group of donors that had contributed over \$350,000 in their lifetime to Ole Miss Athletics. These generous individuals have most certainly built the foundation that we are so proud to stand on today. In addition, Ole Miss Athletics has made tremendous strides in the past 15 years in terms of departmental budget growth and facility construction and enhancements. However, the Southeastern Conference continues to be the most powerful in the nation and its members have made similar strides. As such, we must reach out to the masses in an effort to substantially increase philanthropic giving through what is being called the Vaught Society Initial Public Offering (IPO). The new structure of the Vaught Society is much more inclusive to allow for more donors to invest in the future of Ole Miss Athletics.

To learn more about the Vaught Society, specific projects and naming opportunities, contact Danny White at (662) 915-7159 and dwhite@olemiss.edu or visit www.UMAAFoundation.com.

UM Alumni, Friends Respond to Vaught Society with Gifts

The Vaught Society has exceeded the \$11 million mark in major gift fund raising for Ole Miss Athletics. "We are thrilled that the Vaught Society has garnered such traction and has reached yet another milestone," said Danny White, UMAA Foundation executive director. "Our donors have really stepped up, and we are extremely grateful for their support."

The Vaught Society IPO was launched at the 2010 Cotton Bowl. In just 19 months, steady progress has been made toward its goal of \$12.5 million, thanks to the generosity of alumni and friends. Named for legendary Ole Miss Coach John Vaught – one of the most recognizable names in the history of college football due his success – the Vaught Society is the leadership fund-raising entity under the UMAA Foundation.

Resources from the Vaught Society support the enhancement and construction of state-of-the-art athletics facilities:

Indoor Practice Facility Enhancements –

The IPF opened in 2004 and has become essential to the training and development of student-athletes by enhancing the tools necessary to promote top-tier performance. Benefits of the facility are clear as student-athletes across all sports utilize the training area and weight room.

Adding a new team meeting room to this already first-class facility has the opportunity to set Ole Miss Athletics apart from the competition, while providing flexible and state-of-the-art meeting space for Rebel Athletics. The construction will connect to the

IPF's north end, cutting into the courtyard south of Vaught-Hemingway Stadium.

To date, the necessary funds have been pledged, and construction will begin when a majority of the cash has been received.



Clay & Elinor Herrington Golf Center –

Located adjacent to the Whitten Golf Complex at the Ole Miss Golf Course, the proposed 3,400-square-foot, \$700,000 indoor

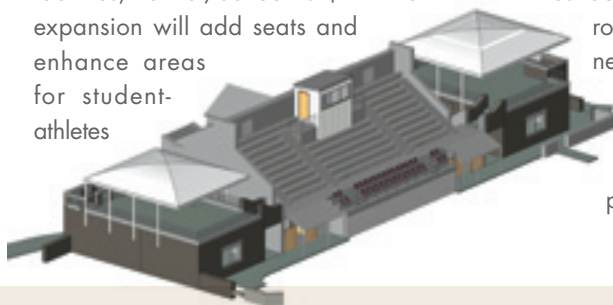
hitting facility will provide state-of-the-art amenities for Rebel golfers. Two full-size hitting bays and a team meeting room are expected to enhance recruiting, training and preparation efforts of the men's and women's golf programs. The complex will also feature the latest in audio-video technology, including computer swing analysis.

A \$448,000 gift from the Clay and Elinor Herrington Charitable Remainder Trust will serve as the lead gift for this project. Elinor Herrington passed away earlier this year and Clay Herrington, the former mayor of Olive Branch, died in 1995. The couple's devotion to Ole Miss was undeniable as was their passion for golf. Their children and grandchildren earned degrees on the Oxford campus.

Additional gifts are required for the facility, and naming opportunities are available.

Palmer/Salloum Tennis Center –

Ranked as one of the nation's finest collegiate tennis facilities, Palmer/Salloum's \$2 million expansion will add seats and enhance areas for student-athletes



and coaches, including team rooms, locker rooms, offices and a study area. The expansion will positively impact Ole Miss' nationally ranked men's and women's tennis programs.

To date, approximately half of the project's cost has been pledged. More gifts are needed, with naming opportunities available.

Basketball Practice Facility –

The teams moved into the new \$13 million, 51,000-square-foot facility in early 2010. Team spaces are specialized with shared weight and training rooms and separate men's and women's film rooms, including computer terminals and video access. Separate team lounges also feature computer access, game areas and kitchenettes. Individual practice courts for the men's and women's teams allow both to maximize practice time.

The staff/coaches spaces are adjacent to the rotunda/lobby. Coaches' offices, a conference room, a copy center, and staff locker and dressing facilities complete the suites. The head coaches' offices provide direct access to and view of their respective practice courts.

There are many naming opportunities available.

Baseball Stadium Expansion –

Following the \$20 million renovations prior to the 2009 season, game day at Swayze Field provides fans one of the best experiences in college baseball. The work included box and grandstand seats extending down the first and third baselines; the Diamond Club area, including 880 club seats; additional concessions and restroom facilities; a state-of-the-art locker room and team meeting room; and a new playground for families to enjoy.

Although the team, coaches and fans enjoy the renovations, there continue to be naming opportunities available.

Currently, there are more than 150 Vaught Society members.

These exceptional individuals are responsible for the additional support that has allowed athletics to flourish. Special thanks are extended to all Vaught Society members, particularly those who have made leadership gifts and commitments.

Anonymous (3)
Roland and Sheryl Burns
Will Galtney
Estate of Clay and Elinor Herrington
Jerry Hollingsworth
Estate of Ken Kirk
Ed and Jan Trehern
Richard and Staci Arriola
Chip and Gina Crunk

Craig and Kathy Johnson
David and Susan McCormick
Crymes and Scarlotte Pittman
Steve Rowell
Shepard Smith
Fred and Cherry Krutz
Jim and Mary Sharp Rayner
W.G. and Polly Watkins



WHAT IS THE 1848 SOCIETY?

Since its founding in 1848, The University of Mississippi has benefited from the foresight and generosity of people who have invested in the future by naming the university as a beneficiary in their wills. As tax laws changed, many other gift plans emerged, and each year these planned gifts have added to the value of the university's endowment and provided funds for professorships, research, facilities, library books, scholarships, lectureships and many other specific programs to enhance academic and athletic excellence. Those who have made commitments to the university through planned gifts have left significant legacies and have truly become partners in the growth and development of the University of Mississippi.

The 1848 Society was established in 1998, the university's 150th year. The society recognizes alumni and friends of the university who have either funded or planned a deferred gift, such as a bequest or a life income plan.

For more information on the 1848 Society, call the UM Foundation at 800-340-9542 or go to www.umfoundation.com and click on "planning a gift."

Frys Plan Gift of Unrestricted Funds to Support University of Mississippi



William N. Fry IV

Business executive William N. Fry IV of New York and Nashville is passionate about alumni providing career mentoring to students and new graduates. He and wife Lee Anne also believe in providing resources and have committed a \$100,000 planned gift to UM.

"Ole Miss produces well-rounded graduates who are not just smart but also adept at the most valuable business capability, which is people skills," said Fry, an urban administration major who went on to earn a master's degree from Harvard Business School. "College degrees should lead individuals to rewarding careers, not just jobs. There is a difference between graduates who just find a paycheck and those who get started on a path

toward skill building and career progression. One of the most valuable actions alumni can take is to make introductions, provide advice and help new graduates get started in their careers. These young leaders will one day sustain and grow this university."

The Frys' planned gift is unrestricted to address UM's greatest needs.

"Those fortunate enough to have done well in their careers need to be leaders in giving back," said Fry, who is also a longtime supporter of athletics. "The university is increasingly responsible for its own financial well-being with decreasing state support. My family and I want to help and believe university leaders know best where funds should be directed."

Fry volunteers his time as former president and current member of the School of Business Administration's advisory board.

"Bill Fry continues to be a wonderful contributor to the business school," said Ken Cyree, dean of business administration. "He speaks to classes of MBA students and undergraduates and is a model of how to get involved to make a difference in the lives of students."

"We greatly appreciate Bill's commitment to the School of Business Administration and his help to create programs and systems to allow our students to be successful in their studies, job searches and careers. His tireless devotion is truly an inspiration, and we are thankful for his dedication," Cyree said.

The Memphis native came to UM on a Navy ROTC scholarship. He then served eight years in the U.S. Navy, completing his career as a lieutenant in the Nuclear Propulsion Program. The businessman formerly served as president of the Dixie Group, chief executive officer of Bell Sports and then Bell Riddell Sports, and CEO of Oreck Corporation. Currently, he is a managing director with American Securities, a private equity firm in New York that owns 24 companies and manages approximately \$6 billion in assets.

Fry's early mentor was Vaughn Grisham, UM professor emeritus of sociology and director emeritus of the George McLean Center for Community Development.

"Bill Fry is one of the brightest people who studied under me, and he is one of the best business leaders that I have met," said Grisham. "He has successfully mentored many top executives and assisted me in conducting national leadership workshops. Bill is the model that I hope all of the participants should be. He represents the very best of Ole Miss graduates – intelligent, caring and giving."

The Frys have two children: Will, a college sophomore, and Katie, a high school senior.

With this gift, the Frys become members of the 1848 Society, which recognizes alumni and friends who fund or plan a deferred gift in support of UM.

"Ole Miss produces well-rounded graduates who are not just smart but also adept at the most valuable business capability, which is people skills. ...College degrees should lead individuals to rewarding careers, not just jobs."

-Bill Fry



Canales Give Rare Civil War Book Collection to Library

Dr. D.J. Canale of Memphis, a retired neurosurgeon, and his wife, Janet, have donated a collection of rare Civil War-era medical books to UM for others to enjoy. The couple's gift of more than 100 items is the largest donation of Civil War-era medical and non-medical books and treatises to the library's Archives and Special Collections. Dr. Canale sold a large group of rare books at Christie's and Swann Auction Galleries in New York but felt his Civil War-related books should be kept together. When he read about a gift attorney Don Barrett of Lexington had made to support the Center for Civil War Research, Canale decided the books should be given to UM. Books and manuals from Canales' collection are on display in the library as part of "This Fiery Trial: An Exhibit on Mississippi and the American Civil War," which runs through September. One of the Canales' three sons, Stuart Jay Canale of Memphis, earned undergraduate and juris doctor degrees from UM.

Tennessee Couple Commits to Fund Scholarships for UM Students

Anne and John Frame of Brentwood, Tenn., first became devoted to each other and to the University of Mississippi as college students more than five decades ago. Those affections have remained steadfast, and the couple recently committed \$1 million to fund scholarships.

"John and I attended Ole Miss at a magical time," said Anne Frame, who was a prestigious Carrier Scholar. "We enjoyed great professors who cared about us and helped broaden our views of the world. We want to be good stewards of the blessings we have received in our lives, and that led to supporting a scholarship fund."

John Frame agreed, saying, "Ole Miss opened doors to leadership and other opportunities that have carried us throughout our lives. Professors, such as Dr. [Huey] Howerton, nurtured us but encouraged us to try our wings. Ole Miss gave me the confidence to do whatever I decided to do. We have remained active alumni, and I think the Ole Miss of today is magnificent. Although we earned a great education, what's here now for students is so much more. There's been such good stewardship of resources."

For those reasons, the Frames have created the John T. and Anne E. Frame Scholarship Endowment to award assistance based on need and merit. First preference will be given to students from southeast Missouri, where John grew up. Otherwise, the funds will support Ole Miss Opportunity, a fund created to help Mississippi students from lower-income families pursue college degrees.

"We are profoundly grateful to Anne and John Frame for their long-term commitment to the University of Mississippi and for their generosity that will impact many lives," said Chancellor Dan Jones. "When I first met the Frames, I

immediately sensed their deep love for Ole Miss and their desire to help strengthen it for future generations. Providing scholarships for deserving students to pursue their degrees is one of the best investments imaginable, and we thank Anne and John for both their vision and their trust in us."

Different paths brought Anne and John Frame to UM. A native of Meridian, Anne said she remembers listening by radio with her father to Ole Miss football games. When the call came announcing her selection for a Carrier Scholarship, her family was ecstatic.

"I loved it here on the Oxford campus," Anne said. "The night I pledged Chi Omega, Mary Ann Mobley crowned Lynda Lee Mead 'Miss America' – both were Chi Omegas from our chapter. The student body was smaller, and everyone knew each other. Our sorority house was filled with people. The whole campus was excited!"

After earning undergraduate and graduate degrees, Anne taught in middle and high schools.

John Frame visited the Oxford campus from his Steele, Mo., home to try out for basketball. He didn't make the team but liked what he saw so

much that he stayed. John was a member and president of Pi Kappa Alpha. He earned a history degree, joined ROTC and was commissioned as a second lieutenant by the U.S. Army upon graduation. He served in the Army Reserves for 22 years, retiring as a lieutenant colonel.

John earned a Master of Divinity from Emory University and has taught classes in Emory's continuing education program and stewardship classes across the nation and internationally. His career in the financial services industry spanned 40 years. The last 14 years were with Invesco AIM, a leading independent global investment management firm, where he was a senior vice president. After retiring, he founded Frame Financial Services.

The Frames are the parents of three children: Steven, Sharon and John, and the grandparents of two: Jessica and Spence.

The Frames established the endowment with a cash gift and will complete the scholarship fund through future gifts and their estates. They become members of the 1848 Society, which recognizes those who fund or plan a deferred gift in support of UM.



UM Chancellor Dan Jones (left) presents Anne and John Frame of Brentwood, Tenn., with their 1848 Society certificate recognizing their commitment to scholarships.

Major Gift to University Museum Reflects Late Couple's Enjoyment of Culture, History



Louise and Lt. Col. James Prentiss Hooper

Lt. Col. James Prentiss Hooper traveled the globe on secret intelligence missions for the U.S. Army, and his wife, Louise Frazier Hooper, accompanied him to many foreign countries. Their appreciation for diverse cultures and history, as well as their devotion to the University of Mississippi, has resulted in a major gift from the late couple's estate to the University Museum and Historic Houses.

"Prentiss and Louise Hooper led a life filled with adventure, and we called 'the Colonel' the Indiana Jones of our family," said Russell E. Aven, a first cousin of Louise Hooper and UM professor emeritus of chemical engineering. "They were interested in everything and developed a love for local resources of learning, such as the University Museum. They knew the value the Museum

provides children and adults through education, adventure and fun."

After serving as an Army second lieutenant in Germany and as a chemist in the Fifth Army Area Laboratory in St. Louis, Prentiss Hooper became a Mandarin Chinese linguist and reported to the Army Surgeon General. Posing as a tourist, he traveled between Hong Kong, Thailand, Laos, India and Nepal. While traveling in northern India, he was granted an audience with the Dalai Lama. He was later assigned to the Panama Canal Zone, where he was a biochemist for Gorgas Hospital and a toxicologist for the Canal Zone government. The majority of his records are classified.

Louise Hooper, a native of Oxford, passed away in 2006, and Prentiss Hooper, a native of Walthall, died in 2009. After Lt. Col. Hooper's 1970 retirement, the couple lived full time in Oxford. The University of Mississippi Foundation has placed their gift in a permanent endowment – the largest ever for the University Museum – and the interest income will be used to expand exhibits, programming and events. The Hoopers also willed the Museum some treasured items from their travels.

Museum Director William Pittman Andrews described the Hooper estate gift as "transformative," adding that the endowment will ensure opportunities for generations to come.

"We will continually be indebted to Lt. Col. and Mrs. Hooper for choosing to share their legacy with the community through support of the University Museum," Andrews said. "Estate gifts such as the Hooper gift create a legacy – a statement that is a lasting memorial – which embodies a person's most significant endorsement of our purpose."

Prentiss Hooper served in the U.S. Navy before enrolling at Ole Miss. He earned a bachelor's degree in biology and a master's degree in pharmacology. Louise Hooper received a bachelor's degree in liberal arts and later worked in the Registrar's Office. Her father, Elton Frazier, was then co-owner with Carl Coors of the Ole Miss Bookstore on campus.

"The Colonel had a business card that pretty much summed up his interests," Aven said. "The card listed sailor, pharmacologist, soldier, skydiver, spy, teacher, tree farmer and fisherman. All of the occupations were crossed out except 'fisherman' – that was the Colonel's unique sense of humor. However, the card didn't name all his interests; others included creating furniture, bird feeders and wood carvings. He was an author, scuba diver, bird watcher and hunter. Just like her mother, Maureen Frazier, Louise was the perfect hostess and loved to entertain."

Upon his retirement, Prentiss Hooper worked in the university's pharmacology department and taught chemistry at Oxford High School. He and his wife were active in their church and the community, including Prentiss taking on roles in plays and musicals. He was inducted into the UM Army ROTC Hall of Fame in 2006 and authored the books *The Bloody Trace* and *Melting the Ice Road*, with the latter addressing his Army career.

Aven said the Hoopers enjoyed pouring over items in the Museum's collections and keeping up with exhibits and activities. Now their estate gift will support all facets of the center that includes William Faulkner's Rowan Oak and the Walton-Young House.

Family, Friends Memorialize Virginia Cantú with Fellowship



Virginia Cantú

The late Virginia Cantú, a research compliance specialist with UM's Office of Research and Sponsored Programs, is remembered for her professional

and personal contributions. That legacy will continue as graduate students in the sciences receive assistance through a fund bearing her name.

The Virginia Dolores Cantú Fellowship Endowment – created by Joe Turner Cantú and Eddie J. Upton as well as through memorial contributions – will provide assistance to graduate students who exhibit commitment to the value of laboratory animal research and importance of humane care of research animals.

"This fellowship honoring her memory is a legacy that will enable others to pursue their education and become, as she was, an agent for change," said Alice Clark, vice chancellor for research and sponsored programs.

Joe Turner Cantú, an associate professor of theatre arts, said he and Upton felt the endowment seemed like it was a fitting choice.

"Virginia wasn't just my loving sister; she also was a lifelong friend and one of the most fascinating people I've ever known. She moved through every day with a generous spirit and a fierce kindness. ... She put a lot of energy into her work and she loved Ole Miss. Virginia and I came from a family that instilled in us the importance of education and the idea that the best way to give back is to support students and their dreams."

The Cantú Fellowship Endowment is open to accept gifts through the University of Mississippi Foundation, P.O. Box 249, University, MS 38677. Checks may be sent to the foundation with the endowment name noted or contributions may be made online at www.umfoundation.com/makeagift.

Folk Art Gallery Opens in Museum to Remember Hattie Mae Edmonds, Her Great Love of the South

To pay tribute to Hattie Mae Edmonds of Clarksville, Tenn., a gallery in her name has been created to exhibit folk art at the University Museum, thanks to gifts from alumni and friends.

The gallery is a fitting way to honor her life, said her son and UM alumnus Mike Edmonds, vice president of student life and dean of students at Colorado College in Colorado Springs.

"My mother was indeed a Southerner, and her name 'Hattie Mae' reflects that clearly," he said. "She also taught her children to admire and treasure the beauty of the South, family, friends, struggle, joy and nature. All of these things are represented in folk art. The Edmonds family remains grateful to our friends from all over who made this happen. We feel blessed and fortunate to have our mother remembered in such a way that allows for her memory to be alive and relevant."

When his mother passed away in 2010, Edmonds said friends asked where to send memorials.

"It only took a little while for me to say, 'Ole Miss' because my mother was so proud that she was able to provide me an opportunity to attend Ole Miss. My mother never had the chance to go to college but valued and loved education so much – and loved Ole Miss."

Edmonds' time at the university was marked by a loss.

"When my father died during my sophomore year at Ole Miss, my mother insisted that I return to Ole Miss and make sure I was able to do so," he said. "Mother knew Ole Miss was a special and dear place. She loved her association with Ole Miss through me, her youngest child and only son."

Edmonds met William Andrews, museum director, while visiting Oxford.

"Mike was introduced to the museum at a critical juncture in our history," said Andrews. "As we recognized the pressing need to represent selections from the permanent collection of folk art, another world-class collection at the museum, we realized the only way would either be through interior construction, or by an addition to the building. From our conversation, Mike and I quickly discovered a mutual love of folk art from the American South. It didn't take us long to come up with a plan which would give Mike the opportunity to honor his mother and allow us to permanently present these important works of art."

The gallery's inaugural exhibit "Defining the Mainstream: The Southern Folk Art Experience" included artwork by James "Son"

Thomas, Purvis Young, Mose Tolliver, Jim Suduth, Rev. Howard Finster, Sulton Rogers, M. B. Mayfield and Luster Willis.

Before joining Colorado College 17 years ago, Edmonds was assistant dean of students and adjunct professor of theatre arts at Ole Miss, where he also earned an undergraduate degree in theatre arts and master's and doctoral degrees in higher education administration. He completed a post-graduate institute at Harvard University.

Those interested in supporting the Edmonds Gallery may contact Michael Upton at 662-915-3027 or mupton@olemiss.edu. Gifts also may be made by mailing a check to the University of Mississippi Foundation, P.O. Box 249, University, Miss. 38677 with the gallery noted in the memo line or by visiting www.umfoundation.com/makeagift.



UM Chancellor Dan Jones (from left) visits with Mike Edmonds and Judy Edmonds at the inaugural exhibit in the Hattie Mae Edmonds Gallery at the University Museum. The gallery honors the life of their mother, a resident of Clarksville, Tenn.

Edith Kelly-Green Designates Planned Gift to Pave Way for Others Through UM Scholarships Named for Women

Perseverance is a quality Edith Kelly-Green has used in building her life, and one that she wants to reward in others. She has committed a deferred gift of \$375,000 to endow three new University of Mississippi scholarships to help young people – particularly those who may have overcome adversity – seek college degrees.

Two of the scholarships are named for women in Kelly-Green's life who know something about perseverance: her 85-year-old mother-in-law, Marion Mullin Kelly Gordon, and her 27-year-old daughter, Jayna Kelly. For over 20 years, Gordon was a cook for sorority and fraternity houses on the UM campus. Two of Mrs. Gordon's children graduated from UM and one of her granddaughters is now attending.

A 2005 UM graduate, Kelly is pursuing a medical degree at the University of Tennessee Health Sciences Center in Memphis and plans to become a surgeon. The third scholarship is named for Kelly-Green, who was the first African-American woman hired at the public accounting firm she joined after earning a UM degree and the first African-American female vice president at FedEx Corporation.

"I was fortunate to attend Ole Miss and receive an education through scholarships and loans," said Kelly-Green, who with her daughter, Jayna, and son, James Kelly, own 11 Lenny's Sub Shop restaurant franchises. She also is the retired vice president and chief sourcing officer for FedEx



Jayna Kelly (from left) and Edith Kelly-Green, both of Memphis, and UM Chancellor Dan Jones announce Kelly-Green's planned gift to endow three new scholarships. Created under the Ole Miss Women's Council, two scholarships will assist students in biology and accountancy, with the third directed toward all majors.

teristic of the University of Mississippi family," he said. "We are profoundly grateful to Edith for this planned gift for scholarships, which will help ensure young people have access to transforming educational opportunities. For many years, Edith has also invested in Ole Miss

Kelly-Green. "We worked very hard to achieve what we have, and the idea of letting go of our money is probably a little more challenging because of that. However, I know of no better way to give to others than to create educational opportunities for them. This university needs more people to give – not equal gifts but equal sacrifice. You never know what a difference you can make by touching someone's life."

In addition to her UM degree, Kelly-Green earned an MBA from Vanderbilt University and is a CPA. She was a senior auditor with Deloitte & Touche before joining the FedEx Corp. Inducted into the Ole Miss Alumni Hall of Fame in 1999, she also is an executive board member of the Alumni Association and past board member of the UM Foundation. In April, she was inducted into the School of Accountancy's Hall of Fame.

Among civic activities, Kelly-Green co-chaired the Pyramid Re-Use Committee; helped found the Women's Foundation for a Greater Memphis; served on the boards of the Center City Commission, Memphis Zoo and Baptist Women's Hospital; and now serves on the board of University of Tennessee Medical Group and Applied Industrial Technologies. A breast cancer survivor, she helps promote opportunities to reduce the risk of cancer.

"By God's grace, I have enjoyed an extraordinary career and family, and by many people's standards, I have been successful. However, I know that to whom much is given, much is expected."

- Edith Kelly-Green

Corp. "By God's grace, I have enjoyed an extraordinary career and family, and by many people's standards, I have been successful. However, I know that to whom much is given, much is expected."

Previously Kelly-Green endowed a scholarship for students in UM's Patterson School of Accountancy in memory of her grandmother, Christine Mitchell Hickonbottom. Mrs. Hickonbottom raised Edith while working as a maid for students at what was then known as the Veteran's Village. Already three students have received this scholarship.

Chancellor Dan Jones expressed appreciation for the support.

"Alumna Edith Kelly-Green embodies the spirit of service that is a distinguishing charac-

initiatives by giving of her time, knowledge and experience. Her service and generosity have greatly strengthened this university."

The scholarships are established under the Ole Miss Women's Council for Philanthropy, which Kelly-Green chaired and continues to support. With an endowment of more than \$8 million, OMWC enhances its scholarships with mentoring and leadership training.

"I hope these scholarships will make a difference in many young people's lives," she said. "I do not want anyone to be unable to attend Ole Miss because they can't afford it. In this day and age, it is almost criminal not to pursue higher education.

"Our family was not born into money," said

Maurice Colly Puts Focus of Planned Gift to Business School on Providing Real-life View of Real Estate Development

Whenever Maurice Colly of Bay St. Louis sees vacant land or an empty building, he always envisions a greater use. He's spent his life developing real estate across the South and now has committed a planned gift with a current value of \$1.1 million to encourage University of Mississippi students to consider similar careers.

The Maurice Colly Real Estate Endowment is designed to bring three successful real estate developers from the mid-South to campus each year to present lectures and provide Ole Miss School of Business Administration students with first-person accounts of the industry and its career potential. The fund will provide support to faculty members coordinating the program and

"My goal is to encourage students to go into real estate development and enjoy great careers that allow them to be their own bosses."

- Maurice Colly

resources to obtain speakers, who will share their experiences and achievements with students.

"My goal is to encourage students to go into real estate development and enjoy great careers that allow them to be their own bosses," said Colly, a 1950 economics major, who after serving a tour as a U.S. Army paratrooper started selling residential real estate in Atlanta. He moved into commercial real estate by networking with another Ole Miss alumnus, the now late Lamar Pierson. "Because I have pursued a career that offers so much, I always wake up looking forward to the day and also have enjoyed traveling a great deal."

Throughout his 58-year career, Colly has developed neighborhood shopping centers, buildings for retail use, and apartment complexes mainly in Mississippi and Georgia, as well as developed International House of Pancakes' sites and restaurants as lessor and leasing agent. He also has been a consultant for real estate investors and has owned and operated private businesses.

"We are grateful for the generosity of Maurice Colly and his willingness to enhance the education of our real estate students and support our faculty," said Ken Cyree, dean of business administration. "His inspiring gift will help bring real estate professionals to campus

to provide knowledge to our students. Through such inspiring philanthropy, Mr. Colly has helped advance our educational mission in the School of Business Administration, and for that we are truly thankful."

Wendell Weakley, president and chief executive officer of the UM Foundation, expressed appreciation to Colly for his gift that broadens educational experiences for students and strengthens the university.

"We deeply appreciate Mr. Colly for committing this planned support that will give our business students important insights to draw on in making career decisions," Weakley said. "By sharing his vision for this unique lectureship program, the business school is able to rely on his experiences and wisdom to design a program that will benefit generations of students. This is an example of how planned giving has such a tremendous impact on our university and its endowment."

An Atlanta native whose family also has roots beginning in 1815, in Mississippi's Hancock County, Colly enrolled at Georgia Tech

in 1946 when Ole Miss did not have enough housing for all the students who had applied for enrollment. Colly, who exhibited determination at a young age, said he called the university week after week checking to see when he could come to campus. He was able to begin in January 1947, when he and another 119 students were housed in the old physical education gym for six weeks before being transferred to Falkner Hall. He later earned a law degree in Atlanta.

Colly has always been active in Alumni Association activities and helped organize the earliest Atlanta alumni club meetings with the late Pierson, who also enjoyed a successful real estate career and helped develop the premier Cherokee Town and Country Club in Atlanta.

"I love Ole Miss and Oxford," Colly said, sprinkling his conversation with stories about his student days. "Ole Miss is a great institution, and I want to do what I can to help it become stronger and stronger. I hope my gift encourages others to consider how they might support Ole Miss."



Business Dean Ken Cyree (left) thanks Maurice Colly of Bay St. Louis for his planned gift to establish an endowment to support faculty and bring speakers from the real estate field to campus to share experiences and insights with students.

Students, Faculty Look Forward to New Pharmacy Practice Building

For 38 years, pharmacy practice students and faculty have been learning and working at the University of Mississippi Medical Center without a building of their own. That will change this fall, when the two-story structure on University Drive is complete.

The 29,500-square-foot “L”-shaped building includes 17 small classrooms, a student lounge, offices for faculty, and laboratory and clinical research space. An attached 160-seat auditorium will be equipped for lectures, seminars and sharing live video with the Oxford campus.

“This state-of-the-art educational facility

study sessions for her classmates, but the task is challenging. With its conference rooms, small group rooms and other areas in which students can congregate, the new building will make the job easier, she said.

“I go to meetings with students in different schools, and they have a sense of community that we don’t have right now,” she said. “Students in other schools are excited for us.”

Despite being scattered over two miles, the pharmacy practice faculty has developed strong clinical and translational research collaborations with Medical Center colleagues, which comple-

pharmacy’s accrediting body, the Accreditation Council for Pharmacy Education, encouraged the school to narrow the gap between academic and research facilities in Jackson and those in Oxford. The ACPE’s concerns mirrored those of pharmacy administrators, who realized students and faculty were becoming increasingly isolated from the rest of the campus.

“This new building, along with the \$31.7 million expansion of the Thad Cochran Research Center in Oxford, will not only improve learning and student and faculty morale but also provide the foundation upon which to continue

“I go to meetings with students in different schools, and they have a sense of community that we don’t have right now. Students in other schools are excited for us.”

- Katie Sims, Pharmacy Student



for students will place them in the heart of UMMC’s academic corridor daily and provide more interaction with students in other health-related professions,” said Leigh Ann Ross, associate dean for clinical affairs and chair of pharmacy practice.

Fourth-year pharmacy student Katie Sims of Athens, Ala., predicts her classmates will enjoy the new building because it will foster more interaction with one another, as well as faculty, who are spread across the campus.

“While attending pharmacy school on the Oxford campus, I practically lived in Faser Hall,” Sims said. “I’d run into faculty in the hall, and if I had questions about something from a class, I could just ask them.”

The School of Pharmacy’s professional degree program is split between Oxford and Jackson. In Oxford, most classes take place in Faser. Without a building such as Faser Hall in Jackson, the transition was “really strange,” Sims said.

As president of her class, Sims organizes

ment the pharmacy school’s research in Oxford. Faculty members also are involved in patient care and, in partnership with the Medical Center, established a pharmacist-run clinic that received a Best Practice Award from the American Society of Health-System Pharmacists for innovations in a model pharmacy practice program.

“Pharmacists are an integral part of the team that delivers health care in this state,” said Dr. James Keeton, UMMC vice chancellor for health affairs. “I speak with Dr. [Barbara] Wells (pharmacy school dean) regularly, and we are both excited about the building project and look forward to enhanced collaboration among the health professional schools at the Medical Center.”

Faculty also implemented a problem-based learning curriculum that has been replicated by other schools, and pharmacy students’ pass rates on the national licensure exam have exceeded 98 percent over the past seven years. The rate was 100 percent for four of those seven years.

The push for the new building came after

building our school’s legacy of excellence on two university campuses,” Dean Wells said. “It will also provide abundant opportunities for interaction between students and faculty in all the health professions, a requirement of new accreditation standards.”

Doctor of Pharmacy (Pharm.D.) students split their seven-year degree program between Oxford and Jackson. In Oxford, students spend three years in pre-pharmacy and two in the professional pharmacy program. Then they head to UMMC for a year of active learning and early practice experiences, followed by a year of advanced practice experiences. Most of their courses moved to the Jackson Medical Mall in the late 1990s, when the school began offering the Pharm.D. degree, which requires students to spend more time in a variety of clinical settings.

“There are many wonderful patient-care activities at the mall,” Ross said. “Our students participate in these activities during their

clinical practice experiences, but for their classroom-based educational activities, it is vitally important that they become more a part of the UMMC student body."

With plans for increasing enrollment, as many as 115 students will be learning in Jackson in their third professional year. A similar number will be enrolled for their fourth professional year in Jackson and at other clinical sites across Mississippi and in Tennessee. The new \$10 million building will amply accommodate these numbers.

Promises to Keep capital campaign

Gifts to the campaign, together with two sizeable federal grants, have provided more than \$10 million to meet the goals of constructing a pharmacy practice building and endowing scholarships and faculty support. Never has the School of Pharmacy received so much in so short a time. Gifts with naming opportunities in the new building continue to be needed.

"We're asking donors to show their support by naming a designated space within the building. Opportunities range from \$10,000 to place a donor's name on a faculty office to \$2.5 million to name the building after a donor," said Sarah Hollis, associate director of development at Ole Miss. "Naming opportunities are an ideal way to publicly show support or to honor a loved one or beloved faculty member."

Alumni and corporate partners alike have committed to a variety of naming designations, but many opportunities are still available. For more information, contact Hollis at 662-915-1584, shollis@olemiss.edu, or Raina McClure at 662-915-6967, rmcclure@olemiss.edu.

Lasting Legacy: Trainees, Colleagues Honor Wiser's Contributions with Endowed Chair

Dr. Winfred L. Wiser's mark on the University of Mississippi Medical Center campus is plain. A hospital, an academic society, a fundraising group for patient needs and now a fully endowed chair bear his name.

Those who knew him best say no one has built such a lasting legacy so quietly. Wiser was chairman of the UMMC Department of Obstetrics and Gynecology from 1976 until his retirement in 1996. He died in 2006.

Now nearly 400 of his former trainees and colleagues, under the leadership of Dr. Rodney Meeks, have succeeded in raising the \$1 million necessary to establish the endowment. Meeks, professor of ob-gyn and current holder of the title of Winfred Wiser Chair, said most endowments are the result of one or two donors who make a large donation, the case with all of the current, fully funded chairs at UMMC.

"This was a real grassroots effort and it reflects how highly respected he was, not only by the people he trained, but by physicians in practice all over the state," said Meeks.

When Wiser became chair, he rescued a languishing ob-gyn department that had difficulty filling its residency slots and turned it into one of the most competitive programs in the country. He started the first research endowment in a medical school department and repaired the broken relationship between the department and the practicing physicians in the state.

"Dr. Wiser established relationships with every ob-gyn in the state," Meeks said. Wiser traveled from Memphis to the Coast to engage their questions and their criticisms.

"Before he came, the department did not have a good relationship with the state's physicians, but he changed all that. In the end, they were this department's greatest supporters."

Wiser was the only person recognized not once, but twice by the American College of Obstetricians and Gynecologists for having the outstanding program in the country.

He was also "one of the most renowned surgeons of our time," Meeks said, but few people other than his patients and his colleagues knew of his reputation. His patients came from all over the United States.

Dr. Frank Page, chief of staff and chair of ob-gyn at St. Vincent's Hospital in Birmingham, said Wiser's skills were more apparent behind the scenes.

"He had the ability to attract and motivate great people and he pushed them into the limelight," Page said.

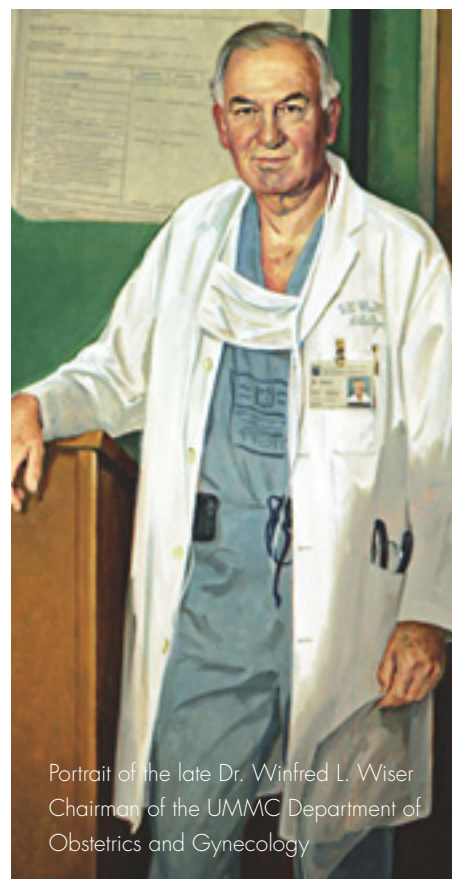
"He never sought the limelight. He just quietly got things done," Meeks said. "In fact, he was a little embarrassed about accepting praise."

Dr. Marty Tucker, in a women's medical practice in Flowood, remembers his mentor as extremely generous to residents. "He loved Commander's Palace in New Orleans, and he always treated the residents and their wives to dinner there when we had a meeting in New Orleans. As a young resident, I really appreciated that."

Page and Tucker were among the charter members of the Winfred L. Wiser Society, a group that Wiser's former residents began in 1986, at the 10th year anniversary of his tenure. The society combined its efforts with the existing Ob-Gyn Alumni Association, to which Wiser had invited all the ob-gyns in the state.

The alumni group, the Wiser Society and even private business professionals have all contributed to the completion of the Wiser chair.

"Many, many people are the beneficiaries of his kindness and insight," said Dr. Jim Martin, professor in the department who is the new president of the American College of Obstetricians and Gynecologists. "He was the finest chairman I ever knew."



Portrait of the late Dr. Winfred L. Wiser
Chairman of the UMMC Department of
Obstetrics and Gynecology

Dentistry Alums' Gifts Keep Spraberry's Memory Alive, Support Future Dentists



Chris and Tracey Spraberry, spring 2009

May 2009 after an accident in his Gulfport home, said Sutton.

"We wanted something we could have in his name that would be around for a long, long time," said Dr. Thomas Hodge, who graduated with Spraberry. "I think it just shows what people thought about Chris. He was a very charismatic and likeable person who touched a lot of lives."

After Spraberry's death, Hodge and other former classmates began brainstorming on ways to pay tribute to his memory. They decided to establish an endowed fund in his name.

"He was so involved in the dental school, and he was such an education advocate. [The scholarship] just validated how much he meant to the school and all his classmates." - Audrey Beasley

Traditionally, an endowment is established with a minimum of \$25,000, of which about 5 percent – or the investment income – is spent per year. By the time the members of the Class of 1995 gathered for an alumni weekend, they had raised \$36,000 and are committed to future contributions. (Memorials for Spraberry's grandmother, who died in the spring, also went to this fund.) The first scholarship recipient has been selected.

After graduation, Chris Spraberry joined his father's practice, bought it in 2002 and later recruited Sutton. The partner said the endowed fund would have meant a lot to Spraberry.

"We thought it was a wonderful idea," said the 2006 graduate. "I think that anything you can do to help to get students through dental school and hopefully keep them in Mississippi is a good thing. That's what Chris would want."

The Spraberry Dental Clinic remains a family business. Dr. Clyde Spraberry, Chris' father, stayed on board and continues to practice. Chris Spraberry's sister, Audrey Beasley, is the office administrator.

Beasley said the endowment was a fitting tribute. "He was so involved in the dental school, and he was such an education advocate. It just validated how much he meant to the school and all his classmates."

Hodge, who runs his own practice in Batesville, said the class rallied behind the idea for the fund and everyone agreed that Spraberry would be happy to know that he is supporting future dentists.

"He was a real caring, compassionate dentist, and he really loved the profession."

Dr. Trey Sutton says it was a longtime friend and mentor who encouraged him to become a dentist, and once Sutton earned his degree, that same mentor hired him to be a partner in his Gulfport practice.

Now, after the tragic 2009 death of his friend, Dr. Chris Spraberry, Sutton finds himself carrying on his legacy by leading the Spraberry Dental Clinic.

"I'd give anything for his memory to stay alive forever," Sutton said. "He was my business partner. We had a goal."

Thanks to his former classmates, Spraberry's memory will live on and at the same time will support younger generations of dental students at the University of Mississippi Medical Center through the Class of 1995 Endowment in the Name of Chris Spraberry.

Husband to Tracey Spraberry and father to four sons and one daughter, Chris Spraberry, 42, died in



PLANNING A GIFT TO THE

University of Mississippi Medical Center

Since 1955, people have come to the University of Mississippi Medical Center every day to seek medical attention for diseases and afflictions, to undertake research to find the cures for tomorrow, and to prepare themselves to take their places as health-care providers and leaders in the future. Gratifyingly, more than 75 percent of our graduates stay in Mississippi to continue their careers and strengthen our state's health-care community. But whether they are applying their knowledge within the state, across the country or around the globe, they are helping building a better state and a better world.

We are fortunate that our graduates also shine powerful light back on the Medical Center through their life-changing contributions to Mississippi's only academic health sciences center.

To request more information on providing private support to the Medical Center, contact the Office of Development at 601-984-2300 or visit www.umc.edu and select the donor option under "UMMC Groups."

The UMMC Office of Development is accepting gifts and donations to grow the fund. To learn more, contact Kay McRee, director of development, at 601-815-7469 or kmcree@umc.edu.

Pediatric Legacy: Department's First Endowed Chairs Honor Pullen, Thames for Advancing Children's Health

The Department of Pediatrics recently wrapped up funding for its first-ever endowed chairs – the Suzan Brown Thames Chair of Pediatrics and the D. Jeanette Pullen Chair of Pediatric Hematology-Oncology.

Currently, \$2 million in donated funds is required to endow a chair at the University of Mississippi Medical Center. This money is then invested with the annual returns directed toward the specific program. Funds from chairs can be used at the holder's discretion in support of department and division functions, such as salary support and research.

The chairs honor two women who have been instrumental in advancing children's health and well-being in the state and beyond.

Although their methods differed, their work often overlapped and together they have spent a combined 60 years advocating for sick and injured children.

The Pullen Chair, named for the professor emeritus of pediatrics and previous director of the Mississippi Children's Cancer Clinic, recognizes Pullen's many contributions to childhood cancer treatment protocols. Over the course of her career, she played an active role in many cooperative clinical studies with the Children's Oncology Group (COG).

This clinical research, pooled with research from other pediatric cancer programs across the nation through the COG, has brought the cure rates for acute lymphocytic leukemia – the most common form of childhood cancer – up to 80 percent.

Her dedication extends beyond the clinic or lab. Early in her career, she recognized the need for broad-based community support for the pediatric cancer program. She played a pivotal role in the development of a Junior League of Jackson volunteer program called Project REACH (Recreation, Enrichment and Activities for Children's Health) that works with young cancer patients.

"I am so incredibly grateful to all the people who have helped to make this possible," said Pullen. "But my biggest joy is knowing how this will help the Division of Pediatric Hematology and Oncology and, first and foremost, the children."

The Thames Chair, named for Ole Miss alumna, pays tribute to her unwavering support of the Blair E. Batson Hospital for Children through grassroots philanthropy and volunteerism. Her involvement with the hospital was born out of her participation in Project REACH, where she met and became friends with Pullen.



Dr. Jeanette Pullen (left) and Suzan Brown Thames are honored with the first-ever endowed chairs in the UMMC Department of Pediatrics. The two have been instrumental in advancing children's health and well-being in the state and beyond.

She then worked alongside Pullen in the Junior League project that raised the \$2 million needed to build the Mississippi Children's Cancer Clinic, on which Batson Hospital was erected.

Thames also is credited with helping create Friends of Children's Hospital, a nonprofit group that supports and promotes awareness of the hospital. Friends has raised more than \$6.8 million to help fund various projects throughout the hospital.

Thames also expressed gratitude to the donors who contributed to the fund, her husband, Tommy, and the Friends board for establishing the chair.

"I'm overwhelmed with pride for the Medical Center. Institutions of this caliber need this type of incentive to attract the very best faculty. We all want only the very best for the children of Mississippi."

- Suzan Brown Thames



Dede Nesbitt (from left) Toby Graves, Jake Wallace, UM Chancellor Dan Jones, Ansley Wallace and Lili Wallace visit in the Lyceum. Their parents acknowledge their positive experiences at Ole Miss through a gift to the Chancellor's Trust.

Wallace Foundation of Nashville Joins Chancellor's Trust

Their parents attended universities around the South and beyond, but five young members of a Nashville family chose Ole Miss for their college home. To recognize the students' positive experiences, the family has joined the Chancellor's Trust.

Johnson B. "Jack" Wallace, Anne W. Nesbitt and Elena W. Graves – all trustees with their family's Louise Bullard Wallace Foundation – have made gifts to the Chancellor's Trust, which provides unrestricted funds for the chancellor and provost to address pressing needs.

Dede Nesbitt, Ansley Wallace and Jake Wallace were looking for a Southeastern Conference school, when Ole Miss came to their attention.

"We had no family connections to the university when we brought them for a campus tour," said Jack Wallace, senior vice president of Willis North America. "They were interested in Ole Miss for different reasons, but they all came to the same conclusion: Ole Miss was the place they wanted to be."

When family members were waiting in the Lyceum for their first campus tour, Wallace said a gentleman walked through the area, stopped to visit them, talked to the prospective students about the university and gave them his undivided attention. As it turned out, he was then Chancellor Robert Khayat.

"We were all impressed that first day, and we've been impressed ever since," Wallace said, adding that since Khayat retired, the family has had the opportunity to get to know Chancellor Dan Jones. "We have been favorably impressed with the administration, and there is a great group of students on the campus. Ole Miss seems to keep students' interests at heart."

Those first family members were joined by Lili Wallace and Toby Graves, and the group is trying to influence five younger family members who have college choices to make in a few years.

"We are fortunate to have a family foundation that provides support to organizations that touch the lives of our family members," said Wallace. "We are happy to provide this gift to Ole Miss."

Chancellor Dan Jones said he appreciated the family's support.

"First of all, we thank family members for entrusting their children and their educational pursuits to us," the chancellor said. "We also are deeply grateful for this gift to the Chancellor's Trust, an important fund that allows us to embrace opportunities, respond to needs, and support student scholarships and faculty development. This family has demonstrated its confidence in the educational experiences we offer our students as well as the direction

the university is moving. We will devote great energies toward upholding this trust."

Nesbitt – whose daughter, Dede, earned a hospitality management degree and now is interning in Washington, D.C. – said she was pleased with many aspects of the university, including the emphasis on students participating in internships and the fact that her daughter got to know many of her professors.

"Ole Miss has a small, safe campus but offers all the advantages of a big school, such as excellent academic programs and great cultural and athletics events," Nesbitt said. "We loved the fact that Dede lived on campus three of her four years. Ole Miss seems like a family. Dede was so happy there which made her family happy. We also loved the Oxford community and its many offerings."

The Wallace Foundation also contributed to the Legacy Fund, which honored Chancellor Emeritus Khayat and provided resources for scholarships and faculty support.

Named for Wallace, Nesbitt and Graves' mother, the Louise Bullard Wallace Foundation supports educational, religious, scientific and cultural initiatives. Louise Bullard "Dede" Wallace worked tirelessly to improve mental health care in middle Tennessee.

Lott Institute Endows Scholarship for Professor Haws



Robert Haws

The Lott Leadership Institute at UM is honoring the outgoing chair of the Department of Public Policy Leadership with a named scholarship.

The Robert J. Haws Scholarship Endowment

honors Haws, founding director of the public policy leadership program. A longtime member of the history faculty and academic director of the Lott Leadership Institute, Haws retired this year. Alumni and friends are invited to help build the endowment.

"Probably the most important aspect of the Lott Leadership Institute is its association with the public policy leadership program," said William Gottshall, the institute's executive director. "Bob took a brand new program in public policy and, through his vision and his interest in students, we have more than 150 students enrolled in the public policy leadership degree-granting program."

The \$50,000 endowment establishes scholarships for public policy leadership majors.

Shortly after the Lott Leadership Institute was launched in 1999, leaders began developing its focus and programs. Haws became involved with the interdisciplinary program dealing with public policy, and the first full graduating class finished in May.

"The purpose of this program is to prepare students to assume positions of responsibility in public life," Haws said. "If you want to gauge the success of the program, look at the accomplishments of the students. And as a group they are really pretty amazing, I think."

Several students served on political campaigns, including a U.S. Senate campaign in Wisconsin, a public action campaign in Washington, D.C., and a congressional campaign in Mississippi. The current Associated Student Body president, secretary and attorney general are all enrolled in the program.

Haws joined the faculty in 1969 as an assistant history professor. He served as assistant director of the University Honors Program, interim director of the Lott Leadership Institute and chair of the Department of History.

To support the endowment, send a check to the University of Mississippi Foundation with the scholarship fund named on the "memo" line, P.O. Box 249, University, Miss. 39677; or visit www.umfoundation.com/makegift.

Alumnus Kevin Null Becomes First to Give Back to Sumners Foundation

UM alumnus Kevin Null of Ackerman remembers how grateful he felt to receive substantial tuition assistance from the Sumners Foundation to earn undergraduate and law degrees. To express appreciation, he has become the first scholar to make a gift back to the foundation that has provided help over the last 30 years to residents of five Mississippi counties.

"For several years, it has been my ambition to return a portion of the funds I received to the Sumners Foundation," said Null, an attorney. "I was surprised to learn from John Sumner, the foundation's attorney, that no one else had previously made such a donation. I agreed to let my gift be publicized in hopes that it would encourage other Sumners recipients to make gifts."

The Sumners Foundation, one of the largest privately funded educational foundations in Mississippi, was established by Mr. and Mrs. E.H. Sumners of Eupora, who shared a desire to improve educational opportunities for young people.

"My aunt and uncle left a wonderful legacy that has helped literally thousands of people pursue their dreams of higher education," said John Sumner (the family later dropped the "s" from the name) of Winona, who earned undergraduate and law degrees from Ole Miss and also has provided long-term support. "We gladly accepted Kevin's gift and are deeply honored that Kevin wanted to give back to the foundation and help other young people."

Natives of Indiana, the Sumners couple built an extensive timber business in central Mississippi. With a goal of honoring her husband's work and furthering their commitment to education, Ging Sumners created the foundation after Harry Sumners died in 1952. She passed away in 1987.

The foundation ensures that individuals in Choctaw, Attala, Carroll, Montgomery and Webster counties receive assistance to attend one of five designated Mississippi universities. Thousands have received the assistance at Ole Miss, and hundreds more at the University of Mississippi Medical Center.

Assistance supports undergraduate, graduate and continuing education. To receive help, students must meet set requirements. On average, each Ole Miss student receives \$5,000 for an academic year, and Medical Center students each receive \$15,000 to \$20,000 annually.

The Sumners Foundation was established when timber from 19,000 acres was sold for \$22 million. Weyerhaeuser now manages the majority of the timberland under a 40-year lease. The remaining 1,361 acres are managed by Regions Morgan Keegan Trust Natural Resources Department. The \$22 million foundation has grown to nearly \$75 million and has distributed approximately \$83 million to students since its creation. Recipients interested in giving back to the Sumners Foundation may contact Lorraine Bleakney at Regions Morgan Keegan Trust, P.O. Box 23100, Jackson, MS 39225-3100.

Null and his wife Angela made the gift to the Sumners Foundation, recognizing that there are future generations who can benefit from the fund. They are the parents of two children, Katherine and John.



Lorraine Bleakney of Regions Morgan Keegan Trust (from left), Kevin Null of Ackerman, John Sumner, Harry Sumner and Rich Nichols of Morgan Keegan Trust mark Null's "giving back" to the Sumners Foundation, which provides scholarships to Mississippians in five counties. Photo courtesy of the Choctaw Plaindealer

Ole Miss Women's Council Honors Olivia Manning

Ole Miss Women's Council for Philanthropy honored Legacy Award recipient Olivia Manning with a public presentation in the Overby Center for Southern Journalism and Politics. The Legacy Award recognizes the contributions of a person who epitomizes the council's goals of philanthropy, leadership and mentorship. The presenting sponsor of the events was Cellular South, with other support from BankPlus, Platinum Sponsor; Entergy, Silver Sponsor; Mollie and Billy Van Devender, Silver Sponsors; FedEx Corp., Bronze Sponsor; University of Mississippi Health Care, Bronze Sponsor; and Gail and Jim Poole, Patrons.



Gloria Kellum (from left, front row), Jan Farrington, Mary Sharp Rayner, Olivia Manning, Kathryn Hester, Susan McCormick, Meredith Creekmore and Molly Meisenheimer; (second row) Pat Cooper, Karen Moore, Becky West, Jane Thomas Rogers, Patricia Lewis, Archie Manning, Mary Ann Frugé, Edith Kelly-Green and Martha Kirkley.

New UM Foundation Board of Directors



DR. BRYAN BARKSDALE
Jackson, Miss.
B.S. 1969
M.D. 1972



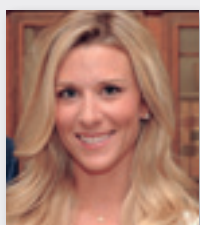
ROLAND O. BURNS JR.
Frisco, Texas
B.Accy. 1982
M.Accy. 1982



C. YORK CRAIG
Jackson, Miss.
B.A. 1968,
Vanderbilt University
J.D. 1973



SALLY H. HEDERMAN
Jackson, Miss.
B.A. 1968
M.F.A. 1986



ABBY MCGREW MANNING
Hoboken, N.J.
B.A. 2005



RICHARD G. NOBLE
Indianola, Miss.
B.B.A. 1968
J.D. 1973



ROBERT SEIBELS III
Montgomery, Ala.
B.A. 1966
M.B.A. 1967,
University of Alabama



JOHN M. "NAT" SUMNER
Winona, Miss.
B.B.A. 1959
L.L.B. 1965

Other Foundation Board Members

GIVING DEDICATED SERVICE:

Robert R. Bailess, Vicksburg, Miss.
Louis K. Brandt, Houston, Texas
David E. Brevard, Tupelo, Miss.
Charles T. Cannada, Jackson, Miss.
James O. Carpenter, Port Gibson, Miss.
Meredith Creekmore, Jackson, Miss.
Allen Crosswell, Houston, Texas
Jan G. Farrington, Ridgeland, Miss.
Roger P. Friou, Ridgeland, Miss.
Martha Dale Fritts, Mc Lean, Va.
T. Michael Glenn, Eads, Tenn.
Samuel B. Haskell III, Oxford, Miss.
Jamie G. Houston, Jackson, Miss.
William T. May, Meridian, Miss.
Michael T. McRee, Jackson, Miss.
Markeeva A. Morgan, Madison, Ala.
Elizabeth W. Quirk, Atlanta, Ga.
Suzan B. Thames, Jackson, Miss.
Jon C. Turner, Jackson, Miss.
Wendell W. Weakley, University, Miss.
Chancellor Daniel W. Jones, M.D.
Ex-officio Member, University, Miss.
Joseph P. Ward, Faculty Representative
University, Miss.

Farrington Brings Wealth of Experience to University Foundation Board of Directors

Philanthropist, investor, healthcare advocate, civic and alumni leader, and visionary – those are just some of the words used to describe Jan Farrington of Ridgeland, the new chair of the University of Mississippi Foundation Board of Directors.

Farrington takes the leadership reins after chairing the Ole Miss Women's Council for Philanthropy and serving as national president of the Ole Miss Alumni Association and the Delta Delta Delta Foundation. She is founder and executive director of the Medical Support and Development Organization, Inc., and is a board member of FNC, Inc.; Mississippi Technology Alliance; and Jeff Anderson Regional Medical Center in Meridian.

The first woman to chair the board of the UM Foundation, Farrington also was the first woman to chair the board of the Mississippi affiliate of the American Heart Association. She has served on two of the AHA's national committees and on the Southern Regional Heart Committee. In addition to helping attract funds for the AHA through the annual Art for Heart event, Farrington and her husband, Lawrence, are longtime supporters of their alma mater and have provided leadership for capital campaigns. They also are involved in encouraging and supporting business students and others in entrepreneurial pursuits.

"Jan Farrington has long recognized the critical role of alumni in ensuring the University of Mississippi is strong for many generations to come," said Chancellor Dan Jones. "She is a perceptive leader who will draw on her deep knowledge and understanding of our university community and of the Ole Miss family to lead the foundation board. The vision and expertise shared by Jan and other foundation board members propel our university to greater service to students, our state and beyond."

Wendell Weakley, president and chief executive officer of the University Foundation, agreed. "Jan has been an outstanding foundation board member and has answered the call to lead in many roles with Ole Miss initiatives. She brings great energy and sound judgment to the chair's position, and we look forward to working with her and other board members as we continue to attract resources that move the university forward," he said.

The Foundation News talked with Farrington about becoming board chair:

FN: *What is the main goal of your two-year term?*

JF: Answering this as succinctly as possible, my goal is to help raise a great deal of private support for Ole Miss. We have built fantastic cornerstones, but the greatest work is still ahead of us. We all know that state funding for higher education in Mississippi is shrinking due to decreasing tax revenues. This makes private gifts critical in providing a margin of excellence.

FN: *You have been deeply involved in the life of your alma mater and have served in numerous alumni leadership positions at UM. How will this hands-on knowledge impact your guidance of the foundation board?*

JF: Serving in other leadership roles has given me a broad perspective of our university. It makes me appreciate how very important it is for all of us to work together and look at Ole Miss as a whole entity. I hope to make everyone aware that the needs and/or challenges in any area of the university affect the entire institution. It is essential that we all help address our most critical needs as we strive for excellence in all of our programs. I so appreciate the leadership of Chancellor Dan Jones because he is keeping us focused on the things that are really important and that will move us ahead to even greater achievements.

FN: *How will your leadership experience with other organizations outside the university help in your service to the foundation board?*

JF: Serving in other leadership capacities has made me keenly aware of how important it is for our flagship university to continue educating people of all ages for the next-generation jobs in business, healthcare, technology, research and education. Mississippi is a unique place. We have amazingly talented, intellectual, tenacious, ambitious and skillful people in this state. We must ensure that we are providing educational programs to develop these attributes. Then, looking from a state perspective, we have to create jobs and career opportunities that will keep our graduates in Mississippi.

FN: *The foundation weathered the recent challenge of bleak economic times in our nation, and the university's endowment now stands at more than \$478.5 million. What are the strengths that carried the foundation through this period of uncertainty?*

JF: The foundation's strong leadership under Wendell Weakley as well as a dedicated board and its Investment Committee helped us weather the storm. Also critical during this time was the continued giving by our remarkable, committed alumni and other friends.

FN: *Why do you personally make investments in education?*

JF: Education is the key to give all people the opportunity for a better, healthier, more productive life.

FN: *People often think of philanthropy as an activity reserved for those who can devote large amounts of financial support to an institution or cause. What is your definition of philanthropy?*

JF: I think of philanthropy as anyone giving any amount of his or her time, talent or resources to help others. In my opinion, the "widow's mite" story in the Bible is the best illustration of true philanthropy. It's all about a giving spirit. Everyone can give something, and if everyone did give something, the impact on the University of Mississippi would be monumental. The greatest and most successful universities are those that have the highest percentages of their alumni and friends giving back – no matter what the amount.

FN: *You have observed our alumni and friends for many years. How would you characterize them?*

JF: Ole Miss alumni and friends are phenomenal in their devotion and commitment to this university. From something as simple as sharing their Grove picnics with total strangers who might be visiting our campus for the first time, to something as lasting as establishing a scholarship or faculty support endowment, our university family shows a pervasive spirit of giving and sharing.

FN: *How do you feel about being the first woman to serve as UM Foundation Board chair?*

JF: I'm very grateful that our university not only gives women the opportunity but also encourages them to serve in leadership roles. I consider this position to be a great privilege, a great opportunity and a great responsibility.





New Name on Circle Honors Henry Brevard Family

David Brevard of Tupelo (from left), Henry and Elizabeth Brevard of Tupelo, and Elise Brevard Smith of Ridgeland gather by the Brevard Hall sign outside the University of Mississippi building formerly known as Old Chemistry. The headquarters for the School of Engineering Complex, Brevard Hall reflects the university's desire to honor the longtime contributions of the Brevard family members – specifically to the School of Engineering and also to the university at large. In the engineering program alone, approximately 500 students to date have pursued college degrees through the financial assistance of Brevard Family Scholarships. The family's new gift creates the Brevard Family Chair in Civil Engineering as well as provides resources for scholarships and operational funds for Brevard Hall. Please see full story on Page 4.

